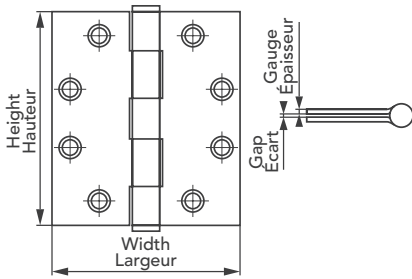


Residential and Commercial Butt Hinges Charnières de porte résidentielles et commerciales



Hinge Dimensions

Dimensions des charnières



Finishes

Finis

CODE	FINISH FINI	CODE	FINISH FINI
AB	Antique Brass / Laiton antique (C5)	MAT	Matte Black / Noir mat
AC	Antique Copper / Cuivre antique	NB	Brushed Nickel / Nickel brossé (C15)
ACB	Brushed Antique Copper / Cuivre antique brossé (C12)	ORB	Oil-Rubbed Bronze / Bronze huilé (C10B)
AE	Antique English / Anglais antique	P	Primed / Apprêtée
AN	Antique Nickel / Nickel antique (C17A)	PB	Polished Brass / Laiton poli (C3)
B	Brass / Laiton (C3-4)	PEW	Pewter / Étain
BB	Bright Brass / Laiton brillant (C3)	PN	Polished Nickel / Nickel poli
BC	Brushed Chrome / Chrome brossé (C26D)	PS	Plain Steel / Acier
BCH	Black Chrome / Chrome noir (686)	PVD	PVD Coated / Revêtement par PVD
BL	Black / Noir	UN	Unlacquered Brass / Laiton non laqué
BS	Satin Brass / Laiton satiné (C4)	SAN	Satin Antique Nickel / Nickel antique satiné (C17A)
BZ	Bronze / Bronze (C9)	SC	Satin Chrome / Chrome satiné (C26D)
C	Chrome / Chrome (C26)	SN	Satin Nickel / Nickel satiné (C15)
CBX	Rust Resistant / Antirouille	SS	Stainless Steel / Acier inoxydable (C32)
CU	Copper / Cuivre	W	White / Blanc
FB	Flat Black / Noir mat	X	Zinc / Zinc (C2G)
GA	Galvanized / Galvanisé	YZ	Yellow Zinc / Zinc jaune (C2D)

Packaging Details

Détails de l'emballage

The packaging types of our products can be found in the last letter(s) of the part number. Please see below for details on packaging codes.

Les types d'emballage de nos produits peuvent être trouvés dans la dernière lettre(s) de numéro de produit. S'il vous plaît voir ci-dessous pour plus de détails sur les codes d'emballage.

CODE	PACKAGING EMBALLAGE
B	Bulk without screws - No UPC / En vrac - Sans vis et sans CUP
BC	Bulk without screws - With UPC / En vrac - Sans vis et avec CUP
E	Econo Pack - Vacuum poly bagged with UPC / « Econo Pack » - Ensable économique avec vis et CUP
IP	Bulk Packed Assembled / Assemblé et emballé en vrac
IPS	Bulk Packed Assembled / Assemblé et emballé en vrac
IPS2	Bulk Packed Assembled / Assemblé et emballé en vrac
KDS	Bulk Packed Unassembled / Non assemblé et emballé en vrac
R	Rack Pack - Hang-up Display Package with Screws and UPC / « Rack Pack » - Emballage accrochable sure présentoir avec vis et CUP
S	Super Pack - Volume poly bagged with UPC / « Super Pack » - Sac en plastique avec vis et CUP
V	Venda Pack - Poly bagged with screws and UPC / « Venda Pack » - Sac en plastique avec vis et CUP

Note: Maximum Load Weight Rating based on using 3 hinges.

À noter : Capacité de charge maximale fondée sur l'utilisation de trois (3) charnières.

Commercial Hinges - Square Charnières commerciales - Carrées

- Reversible
- Assembled
- Screws included
- Réversible
- Assemblée
- Vis incluses

NO.	FINISH FINI	PIN GOUPILLE	STYLE	STANDARDS NORMES	GAUGE ÉPAISSEUR	GAP ÉCART	WIDTH LARGEUR	HEIGHT HAUTEUR	MAX. LOAD* CHARGE MAX.*	PK PC	BOX BTE	CASE CAISSE
554823BCB	BC	Removable Amovible	Ball Bearing Roulement à bille	ANSI Grade 1	4.5 mm	4.5 mm	5"	5"	175 lb (79 kg)	3	1	16
554823BCNRPB	BC	Non-Removable Non amovible	Ball Bearing Roulement à bille	ANSI Grade 1	4.5 mm	4.5 mm	5"	5"	175 lb (79 kg)	3	1	16
544823BCB	BC	Removable Amovible	Ball Bearing Roulement à bille	ANSI Grade 1	4.5 mm	4.5 mm	4-1/2"	5"	175 lb (79 kg)	3	1	16
544823BCNRP	BC	Non-Removable Non amovible	Ball Bearing Roulement à bille	ANSI Grade 1	4.5 mm	4.5 mm	4-1/2"	5"	175 lb (79 kg)	3	1	16
8295XBC*	X	Removable Amovible	Non-ball Bearing Non roulement à bille	-	3.4 mm	1/16"	4-1/2"	4-1/2"	-	1	10	100
44823BCB	BC	Removable Amovible	Ball Bearing Roulement à bille	ANSI Grade 2	3.4 mm	1/16"	4"	4-1/2"	150 lb (68 kg)	3	1	20
44823CB	C	Removable Amovible	Ball Bearing Roulement à bille	ANSI Grade 2	3.4 mm	1/16"	4"	4-1/2"	150 lb (68 kg)	3	1	20
4823ABB	AB	Removable Amovible	Ball Bearing Roulement à bille	ANSI Grade 2	3.4 mm	1/16"	4"	4-1/2"	150 lb (68 kg)	3	1	20
4823ANB	AN	Removable Amovible	Ball Bearing Roulement à bille	ANSI Grade 2	3.4 mm	1/16"	4"	4-1/2"	150 lb (68 kg)	3	1	20
4823BBB	BB	Removable Amovible	Ball Bearing Roulement à bille	ANSI Grade 2	3.4 mm	1/16"	4"	4-1/2"	150 lb (68 kg)	3	1	20
4823BCB	BC	Removable Amovible	Ball Bearing Roulement à bille	ANSI Grade 2	3.4 mm	1/16"	4"	4-1/2"	150 lb (68 kg)	3	1	20
4823BSB	BS	Removable Amovible	Ball Bearing Roulement à bille	ANSI Grade 2	3.4 mm	1/16"	4"	4-1/2"	150 lb (68 kg)	3	1	20
4823FBB	FB	Removable Amovible	Ball Bearing Roulement à bille	ANSI Grade 2	3.4 mm	1/16"	4"	4-1/2"	150 lb (68 kg)	3	1	20
4823NBB	NB	Removable Amovible	Ball Bearing Roulement à bille	ANSI Grade 2	3.4 mm	1/16"	4"	4-1/2"	150 lb (68 kg)	3	1	20
4823ORBB	ORB	Removable Amovible	Ball Bearing Roulement à bille	ANSI Grade 2	3.4 mm	1/16"	4"	4-1/2"	150 lb (68 kg)	3	1	20
4823SSB	SS	Removable Amovible	Ball Bearing Roulement à bille	ANSI Grade 2	3.4 mm	1/16"	4"	4-1/2"	150 lb (68 kg)	3	1	20
45823BCB	BC	Non-Removable Non amovible	Ball Bearing Roulement à bille	ANSI Grade 2	3.4 mm	1/16"	4"	4-1/2"	150 lb (68 kg)	3	1	20
45823FBB	FB	Non-Removable Non amovible	Ball Bearing Roulement à bille	ANSI Grade 2	3.4 mm	1/16"	4"	4-1/2"	150 lb (68 kg)	3	1	20
45823SSBC	SS	Non-Removable Non amovible	Ball Bearing Roulement à bille	ANSI Grade 2	3.4 mm	1/16"	4"	4-1/2"	150 lb (68 kg)	3	1	20
3823BBB	BB	Non-Removable Non amovible	Non-ball Bearing Non roulement à bille	ANSI Grade 3	3.4 mm	1/16"	4"	4-1/2"	75 lb (34 kg)	3	1	20
3823BCB	BC	Non-Removable Non amovible	Non-ball Bearing Non roulement à bille	ANSI Grade 3	3.4 mm	1/16"	4"	4-1/2"	75 lb (34 kg)	3	1	20
3823BSB	BS	Non-Removable Non amovible	Non-ball Bearing Non roulement à bille	ANSI Grade 3	3.4 mm	1/16"	4"	4-1/2"	75 lb (34 kg)	3	1	20
3823NBB	NB	Non-Removable Non amovible	Non-ball Bearing Non roulement à bille	ANSI Grade 3	3.4 mm	1/16"	4"	4-1/2"	75 lb (34 kg)	3	1	20
4822FBB	FB	Non-Removable Non amovible	Ball Bearing Roulement à bille	-	3.3 mm	1/16"	4"	4"	-	3	1	20
4822NBB	NB	Non-Removable Non amovible	Ball Bearing Roulement à bille	-	3.3 mm	1/16"	4"	4"	-	3	1	20

* 8295XBC does not include screws

* Modèle 8295XBC, vis non incluses



45823BCB



3823BBB

Commercial Hinges - 1/4" Radius Charnières commerciales - Rayon de 1/4 po

- Reversible
- Assembled
- Screws included
- Réversible
- Assemblée
- Vis incluses

NO.	FINISH FINI	PIN GOUPILLE	STYLE	GAUGE ÉPAISSEUR	GAP ÉCART	WIDTH LARGEUR	HEIGHT HAUTEUR	PK PC	BOX BTE	CASE CAISSE
42822CB	C	Non-Removable Non amovible	Ball Bearing Roulement à bille	3.3 mm	1/16"	4"	4"	3	1	20
42822FBB	FB	Removable Amovible	Ball Bearing Roulement à bille	3.3 mm	1/16"	4"	4"	3	1	20
42822NBB	NB	Removable Amovible	Ball Bearing Roulement à bille	3.3 mm	1/16"	4"	4"	3	1	20



42822FBB

Solid Brass Hinges - Square

Charnières en laiton massif - Carrées

- Non-Removable Pin
- Ball Bearing
- Assembled
- Screws included
- Goupille non amovible
- Roulement à bille
- Assemblée
- Vis incluses

NO.	FINISH FINI	GAUGE ÉPAISSEUR	GAP ÉCART	WIDTH LARGEUR	HEIGHT HAUTEUR	PK PC	BOX BTE	CASE CAISSE
LM45118	ORB	1/8"	3.0 mm	4"	4-1/2"	2	1	25
LM45338	PEW	1/8"	3.0 mm	4"	4-1/2"	2	1	25
LM45448	AB	1/8"	3.0 mm	4"	4-1/2"	2	1	25
LM45668	SC	1/8"	3.0 mm	4"	4-1/2"	2	1	25
LM45778	PB	1/8"	3.0 mm	4"	4-1/2"	2	1	25
LM45818	FB	1/8"	3.0 mm	4"	4-1/2"	2	1	25
LM45888	BC	1/8"	3.0 mm	4"	4-1/2"	2	1	25
LM45PN	PN	1/8"	3.0 mm	4"	4-1/2"	2	1	25
LM45UNLACW	UN	1/8"	3.0 mm	4"	4-1/2"	2	1	25
SB44118ORBSB	ORB	1/8"	1/16"	4"	4"	2	1	25
SB44228	SC	1/8"	1/16"	4"	4"	2	1	25
SB44338	PEW	1/8"	1/16"	4"	4"	2	1	25
SB44448	AB	1/8"	1/16"	4"	4"	2	1	25
SB44778	PVD	1/8"	1/16"	4"	4"	2	1	25
SB44818	FB	1/8"	1/16"	4"	4"	2	1	25
SB33118ORBSB	ORB	1/8"	1/16"	3"	3"	2	1	25
SB33228	SC	1/8"	1/16"	3"	3"	2	1	25
SB33338	PEW	1/8"	1/16"	3"	3"	2	1	25
SB33448	AB	1/8"	1/16"	3"	3"	2	1	25
SB33778	PVD	1/8"	1/16"	3"	3"	2	1	25
SB33818	FB	1/8"	1/16"	3"	3"	2	1	25



LM45448



SB44228



SB33228

Solid Brass Hinges - Combination - Pagoda Tips

Charnières en laiton massif - Combinées - Embouts à pagode

- Non-Removable Pin
- Ball-Bearing
- Assembled
- Screws Included
- *Material: Steel
- Goupille non amovible
- Roulement à bille
- Assemblée
- Vis incluses
- *Matériau : Acier

NO.	FINISH FINI	TYPE OF TIP STYLE D'EMBOUIT	GAUGE ÉPAISSEUR	GAP ÉCART	WIDTH LARGEUR	HEIGHT HAUTEUR	PK PC	CASE CAISSE
BB118PNRP	ORB	Screw-On Tips Embouts à visser	3 mm	2.3 mm	4"	4"	2	25
BB138PNRPDP3*	SC	Fixed Tips Embouts fixes	2.5 mm	1/8"	4"	4"	2	50
BB218PNRPDP3*	SN	Fixed Tips Embouts fixes	2.5 mm	1/8"	4"	4"	2	50
BB228PNRP	SN	Screw-On Tips Embouts à visser	3 mm	2.3 mm	4"	4"	2	25
BB318PNRPDP3*	PEW	Fixed Tips Embouts fixes	2.5 mm	1/8"	4"	4"	2	50
BB338PNRP	PEW	Screw-On Tips Embouts à visser	3 mm	2.3 mm	4"	4"	2	25
BB448PNRP	AB	Screw-On Tips Embouts à visser	3 mm	2.3 mm	4"	4"	2	25
BB518PNRPDP3*	FB	Fixed Tips Embouts fixes	2.5 mm	1/8"	4"	4"	2	50
BB558PNRP	BB	Screw-On Tips Embouts à visser	3 mm	2.3 mm	4"	4"	2	25
BB718PNRPDP3*	ORB	Fixed Tips Embouts fixes	2.5 mm	1/8"	4"	4"	2	50
BB818PNRP	FB	Screw-On Tips Embouts à visser	3 mm	2.3 mm	4"	4"	2	25
BB888PNRP	BC	Screw-On Tips Embouts à visser	3 mm	2.3 mm	4"	4"	2	25



BB118PNRP

Solid Brass Hinges - Combination Charnières en laiton massif - Combinées

- Non-Removable Pin
- Screws Included
- *Material: Steel
- Goupille non amovible
- Vis incluses
- *Matériau : Acier

NO.	FINISH FINI	STYLE	ASSEMBLY ASSEMBLÉE	GAUGE ÉPAISSEUR	GAP ÉCART	WIDTH LARGEUR	HEIGHT HAUTEUR	PK PC	BOX BTE	CASE CAISSE
BB078DP3	BB	Ball Bearing Roulement à bille	Assembled Assemblée	1/8"	1/8"	4"	4"	1	1	50
BB078NRP	BB	Ball Bearing Roulement à bille	Non-Assembled Non assemblée	1/8"	1/8"	4"	4"	1	1	50
BB118NRP	ORB	Ball Bearing Roulement à bille	Assembled Assemblée	3 mm	2.3 mm	4"	4"	1	1	25
BB228NRP	SN	Ball Bearing Roulement à bille	Assembled Assemblée	3 mm	2.3 mm	4"	4"	1	1	25
BB338NRP	PEW	Non-ball Bearing Non roulement à bille	Assembled Assemblée	3 mm	2.3 mm	4"	4"	1	1	25
BB448NRP	AB	Ball Bearing Roulement à bille	Assembled Assemblée	3 mm	2.3 mm	4"	4"	1	1	25
BB558NRP	BB	Ball Bearing Roulement à bille	Assembled Assemblée	3 mm	2.3 mm	4"	4"	1	1	25
BB648	AN	Ball Bearing Roulement à bille	Non-Assembled Non assemblée	1/8"	1/8"	4"	4"	1	1	50
BB778NRP	PVD	Ball Bearing Roulement à bille	Assembled Assemblée	3 mm	2.3 mm	4"	4"	1	1	25
BB818NRP	FB	Ball Bearing Roulement à bille	Assembled Assemblée	3 mm	2.3 mm	4"	4"	1	1	25
BB888NRP	SC	Ball Bearing Roulement à bille	Assembled Assemblée	3 mm	2.3 mm	4"	4"	1	1	25
LM18NRP	ORB	Ball Bearing Roulement à bille	Assembled Assemblée	3 mm	4 mm	4"	4"	2	1	25
LM38NRP	PEW	Ball Bearing Roulement à bille	Assembled Assemblée	3 mm	4 mm	4"	4"	2	1	25
LM48NRP	AB	Ball Bearing Roulement à bille	Assembled Assemblée	3 mm	4 mm	4"	4"	2	1	25
LM78NRP	BB	Ball Bearing Roulement à bille	Assembled Assemblée	3 mm	4 mm	4"	4"	2	1	25
LM818NRP	FB	Ball Bearing Roulement à bille	Assembled Assemblée	3 mm	4 mm	4"	4"	2	1	25
LM88NRP	SC	Ball Bearing Roulement à bille	Assembled Assemblée	3 mm	4 mm	4"	4"	2	1	25
LM98NRP	AN	Ball Bearing Roulement à bille	Assembled Assemblée	3 mm	4 mm	4"	4"	2	1	25
PB2012*	SC	Non-ball Bearing Non roulement à bille	Assembled Assemblée	3.0 mm	1/16"	4"	4"	2	1	50
PBSS30418	SS	Non-ball Bearing Non roulement à bille	Assembled Assemblée	2.5 mm	1/8"	4"	4"	2	1	50



BB558NRP



LM38NRP

Solid Brass Hinges - Finials Embouts de charnière

NO.	FINISH FINI	STYLE	PK PC	BOX BTE	CASE CAISSE
A127118	ORB	Pagoda Tip Embout à pagode	1	100	1000
A127228	SN	Pagoda Tip Embout à pagode	1	100	1000
A127338	PEW	Pagoda Tip Embout à pagode	1	100	1000
A127448	AB	Pagoda Tip Embout à pagode	1	100	1000
A127558	BB	Pagoda Tip Embout à pagode	1	100	1000
A127778	PB	Pagoda Tip Embout à pagode	1	100	1000
A127818	FB	Pagoda Tip Embout à pagode	1	100	1000
A127888	SC	Pagoda Tip Embout à pagode	1	100	1000
A127998	CU	Pagoda Tip Embout à pagode	1	100	1000
A133118	ORB	Ball Tip Embout à boule	1	100	1000
A133338	PEW	Ball Tip Embout à boule	1	100	1000
A133448	AB	Ball Tip Embout à boule	1	100	1000
A133818	FB	Ball Tip Embout à boule	1	100	1000
A133888	SC	Ball Tip Embout à boule	1	100	1000
A133998	CU	Ball Tip Embout à boule	1	100	1000

NO.	FINISH FINI	STYLE	PK PC	BOX BTE	CASE CAISSE
A134118	ORB	Crown Tip Embout à couronne	1	100	1000
A134338	PEW	Crown Tip Embout à couronne	1	100	1000
A134448	AB	Crown Tip Embout à couronne	1	100	1000
A134778	PB	Crown Tip Embout à couronne	1	100	1000
A134818	ORB	Crown Tip Embout à couronne	1	100	1000
A134888	SC	Crown Tip Embout à couronne	1	100	1000
A134998	CU	Crown Tip Embout à couronne	1	100	1000
FLATTIP118	ORB	Flat Tip Embout plat	1	100	1000
FLATTIP228	SN	Flat Tip Embout plat	1	100	1000
FLATTIP338	PEW	Flat Tip Embout plat	1	100	1000
FLATTIP448	AB	Flat Tip Embout plat	1	100	1000
FLATTIP558	BB	Flat Tip Embout plat	1	100	1000
FLATTIP818	FB	Flat Tip Embout plat	1	100	1000
FLATTIP888	SC	Flat Tip Embout plat	1	100	1000



A127



A133



A134



FLATTIP

Residential - Exterior Butt Hinges - Square Charnières extérieures - Résidentielles - Carrées

- Non-Ball Bearing
- Assembled
- Non roulement à bille
- Assemblée

NO.	FINISH FINI	PIN GOUPILLE	GAUGE ÉPAISSEUR	GAP ÉCART	WIDTH LARGEUR	HEIGHT HAUTEUR	MAX. LOAD* CHARGE MAX.*	SCREWS VIS	PK PC	BOX BTE	CASE CAISSE
2829XV	X	Non-Removable Non amovible	2.5 mm	1/8"	4"	4"	-	Included Includes	2	10	50
822ANB	AN	Removable Amovible	2.5 mm	1/16"	4"	4"	60 lb (27 kg)	Included Includes	2	5	50
822BB	B	Removable Amovible	2.5 mm	1/16"	4"	4"	60 lb (27 kg)	Included Includes	2	5	50
822BV	B	Removable Amovible	2.5 mm	1/16"	4"	4"	60 lb (27 kg)	Included Includes	1	10	100
822BCB	BC	Removable Amovible	2.5 mm	1/16"	4"	4"	60 lb (27 kg)	Included Includes	2	5	50
822BCV	BC	Removable Amovible	2.5 mm	1/16"	4"	4"	60 lb (27 kg)	Included Includes	1	10	100
822BZB	BZ	Removable Amovible	2.5 mm	1/16"	4"	4"	60 lb (27 kg)	Included Includes	2	5	50
822CB	C	Removable Amovible	2.5 mm	1/16"	4"	4"	60 lb (27 kg)	Included Includes	2	5	50
822FBB	FB	Removable Amovible	2.5 mm	1/16"	4"	4"	60 lb (27 kg)	Included Includes	2	5	50
822NBB	NB	Removable Amovible	2.5 mm	1/16"	4"	4"	60 lb (27 kg)	Included Includes	2	5	50
822NBV	NB	Removable Amovible	2.5 mm	1/16"	4"	4"	60 lb (27 kg)	Included Includes	1	10	100
822ORB	ORB	Removable Amovible	2.5 mm	1/16"	4"	4"	60 lb (27 kg)	Included Includes	2	5	50
822SSB	SS	Removable Amovible	2.5 mm	1/16"	4"	4"	60 lb (27 kg)	Included Includes	2	5	50
822WB	W	Removable Amovible	2.5 mm	1/16"	4"	4"	60 lb (27 kg)	Included Includes	2	5	50
829FBR	FB	Removable Amovible	2.5 mm	1/8"	4"	4"	-	Included Includes	2	5	25
829GAR	GA	Removable Amovible	2.5 mm	1/8"	4"	4"	-	Included Includes	2	5	25
829XB	X	Removable Amovible	2.5 mm	1/8"	4"	4"	-	Not Included Non includes	1	10	100
829XBC	X	Removable Amovible	2.5 mm	1/8"	4"	4"	-	Not Included Non includes	1	10	100
829XV	X	Removable Amovible	2.5 mm	1/8"	4"	4"	-	Included Includes	2	10	50



822FBB

Residential - Exterior Butt Hinges - 5/8" Radius Charnières extérieures - Résidentielles - Rayon de 5/8 po

- Non-Ball Bearing
- Assembled
- Non roulement à bille
- Assemblée

NO.	FINISH FINI	PIN GOUPILLE	GAUGE ÉPAISSEUR	GAP ÉCART	WIDTH LARGEUR	HEIGHT HAUTEUR	MAX. LOAD* CHARGE MAX.*	SCREWS VIS	PK PC	BOX BTE	CASE CAISSE
1822BCNRPB	BC	Non-Removable Non amovible	2.5 mm	1/16"	4"	4"	60 lb (27 kg)	Included Includes	2	5	50
1822FBNRPB	FB	Non-Removable Non amovible	2.5 mm	1/16"	4"	4"	60 lb (27 kg)	Included Includes	2	5	50
1822NBNRPB	NB	Non-Removable Non amovible	2.5 mm	1/16"	4"	4"	60 lb (27 kg)	Included Includes	2	5	50
1822ORBNRPB	ORB	Non-Removable Non amovible	2.5 mm	1/16"	4"	4"	60 lb (27 kg)	Included Includes	2	5	50
1822BB	B	Removable Amovible	2.5 mm	1/16"	4"	4"	60 lb (27 kg)	Included Includes	2	5	50
1822BCB	BC	Removable Amovible	2.5 mm	1/16"	4"	4"	60 lb (27 kg)	Included Includes	2	5	50
1822FBB	FB	Removable Amovible	2.5 mm	1/16"	4"	4"	60 lb (27 kg)	Included Includes	2	5	50
1822NBB	NB	Removable Amovible	2.5 mm	1/16"	4"	4"	60 lb (27 kg)	Included Includes	2	5	50
1822ORB	ORB	Removable Amovible	2.5 mm	1/16"	4"	4"	60 lb (27 kg)	Included Includes	2	5	50
1822XIP	X	Removable Amovible	2.5 mm	1/16"	4"	4"	60 lb (27 kg)	Included Includes	2	-	50



1822ORB

Residential - Exterior Butt Hinges Charnières extérieures - Résidentielles

Residential - Exterior Butt Hinges - 1/4" Radius Charnières extérieures - Résidentielles - Rayon de 1/4 po

- Removable Pin
- Non-Ball Bearing
- Assembled
- Goupille amovible
- Non roulement à bille
- Assemblée

NO.	FINISH FINI	PIN GOUPILLE	GAUGE ÉPAISSEUR	GAP ÉCART	WIDTH LARGEUR	HEIGHT HAUTEUR	MAX. LOAD* CHARGE MAX.*	SCREWS VIS	PK PC	BOX BTE	CASE CAISSE
2822BB	B	Removable Amovible	2.5 mm	1/16"	4"	4"	60 lb (27 kg)	Included Inclus	2	5	50
2822BCB	BC	Removable Amovible	2.5 mm	1/16"	4"	4"	60 lb (27 kg)	Included Inclus	2	5	50
2822FBB	FB	Removable Amovible	2.5 mm	1/16"	4"	4"	60 lb (27 kg)	Included Inclus	2	5	50
2822NBB	NB	Removable Amovible	2.5 mm	1/16"	4"	4"	60 lb (27 kg)	Included Inclus	2	5	50
2822ORBB	ORB	Removable Amovible	2.5 mm	1/16"	4"	4"	60 lb (27 kg)	Included Inclus	2	5	50



2822BB

Residential - Exterior Butt Hinges - Combination Charnières extérieures - Résidentielles - Combinées

- Screws Included
- Vis incluses

NO.	FINISH FINI	PIN GOUPILLE	STYLE	ASSEMBLY ASSEMBLÉE	GAUGE ÉPAISSEUR	GAP ÉCART	WIDTH LARGEUR	HEIGHT HAUTEUR	PK PC	BOX BTE	CASE CAISSE
BB028	SC	Removable Amovible	Ball Bearing Roulement à bille	Non-Assembled Non assemblée	2.5 mm	1/8"	4"	4"	1	1	50
BB028AD	SC	Removable Amovible	Ball Bearing Roulement à bille	Right Hand Main droite	2.5 mm	1/8"	4"	4"	1	1	50
BB028AG	SC	Removable Amovible	Ball Bearing Roulement à bille	Left Hand Main gauche	2.5 mm	1/8"	4"	4"	1	1	50
BB138	SC	Non-Removable Non amovible	Ball Bearing Roulement à bille	Non-Assembled Non assemblée	2.5 mm	1/8"	4"	4"	1	1	50
BB138DP3	SC	Non-Removable Non amovible	Ball Bearing Roulement à bille	Assembled Assemblée	2.5 mm	1/8"	4"	4"	1	1	50
BB218	SN	Non-Removable Non amovible	Ball Bearing Roulement à bille	Non-Assembled Non assemblée	2.5 mm	1/8"	4"	4"	1	1	50
BB218DP3	SN	Non-Removable Non amovible	Ball Bearing Roulement à bille	Assembled Assemblée	2.5 mm	1/8"	4"	4"	1	1	50
BB318	PEW	Non-Removable Non amovible	Ball Bearing Roulement à bille	Non-Assembled Non assemblée	2.5 mm	1/8"	4"	4"	1	1	50
BB318DP3	PEW	Non-Removable Non amovible	Ball Bearing Roulement à bille	Assembled Assemblée	2.5 mm	1/8"	4"	4"	1	1	50
BB418	AB	Non-Removable Non amovible	Ball Bearing Roulement à bille	Non-Assembled Non assemblée	2.5 mm	1/8"	4"	4"	1	1	50
BB418DP3	AB	Non-Removable Non amovible	Ball Bearing Roulement à bille	Assembled Assemblée	2.5 mm	1/8"	4"	4"	1	1	50
BB518	FB	Non-Removable Non amovible	Ball Bearing Roulement à bille	Non-Assembled Non assemblée	2.5 mm	1/8"	4"	4"	1	1	50
BB518DP3	FB	Non-Removable Non amovible	Ball Bearing Roulement à bille	Assembled Assemblée	2.5 mm	1/8"	4"	4"	1	1	50
BB718	ORB	Non-Removable Non amovible	Ball Bearing Roulement à bille	Non-Assembled Non assemblée	2.5 mm	1/8"	4"	4"	1	1	50
BB718DP3	ORB	Non-Removable Non amovible	Ball Bearing Roulement à bille	Assembled Assemblée	2.5 mm	1/8"	4"	4"	1	1	50
BBSS30418	SS	Non-Removable Non amovible	Ball Bearing Roulement à bille	Non-Assembled Non assemblée	2.5 mm	1/8"	4"	4"	1	1	50
BBSS30418AD	SS	Non-Removable Non amovible	Ball Bearing Roulement à bille	Right Hand Main droite	2.5 mm	1/8"	4"	4"	1	1	50
BBSS30418AG	SS	Non-Removable Non amovible	Ball Bearing Roulement à bille	Left Hand Main gauche	2.5 mm	1/8"	4"	4"	1	1	50
BBZP028	X	Removable Amovible	Ball Bearing Roulement à bille	Non-Assembled Non assemblée	2.5 mm	1/8"	4"	4"	1	1	50
BBZP028AD	X	Non-Removable Non amovible	Ball Bearing Roulement à bille	Right Hand Main droite	2.5 mm	1/8"	4"	4"	1	1	50
BBZP028AG	X	Non-Removable Non amovible	Ball Bearing Roulement à bille	Left Hand Main gauche	2.5 mm	1/8"	4"	4"	1	1	50
BBZP138	X	Non-Removable Non amovible	Ball Bearing Roulement à bille	Non-Assembled Non assemblée	2.5 mm	1/8"	4"	4"	1	1	50
BBZP138DP3	X	Non-Removable Non amovible	Ball Bearing Roulement à bille	Assembled Assemblée	2.5 mm	1/8"	4"	4"	1	1	50
81822ABB	AB	Removable Amovible	Non-ball Bearing Non roulement à bille	Assembled Assemblée	2.5 mm	1/8"	4"	4"	3	1	5
81822ANB	AN	Removable Amovible	Non-ball Bearing Non roulement à bille	Assembled Assemblée	2.5 mm	1/8"	4"	4"	3	1	5
81822BB	B	Removable Amovible	Non-ball Bearing Non roulement à bille	Assembled Assemblée	2.5 mm	1/8"	4"	4"	3	1	5
81822BCB	BC	Removable Amovible	Non-ball Bearing Non roulement à bille	Assembled Assemblée	2.5 mm	1/8"	4"	4"	3	1	5
81822FBB	FB	Removable Amovible	Non-ball Bearing Non roulement à bille	Assembled Assemblée	2.5 mm	1/8"	4"	4"	3	1	5
81822NBB	NB	Removable Amovible	Non-ball Bearing Non roulement à bille	Assembled Assemblée	2.5 mm	1/8"	4"	4"	3	1	5
81822ORBB	ORB	Removable Amovible	Non-ball Bearing Non roulement à bille	Assembled Assemblée	2.5 mm	1/8"	4"	4"	3	1	5



BB718



81822ORBB

Residential - Exterior Butt Hinges - Combination Charnières extérieures - Résidentielles - Combinées

- Removable Pin
- Ball Bearing
- Screws Included
- Goupille amovible
- Roulement à bille
- Vis incluses



4818226ABIPL

NO.	FINISH FINI	ASSEMBLY ASSEMBLÉE	STANDARDS NORMES	GAUGE ÉPAISSEUR	GAP ÉCART	WIDTH LARGEUR	HEIGHT HAUTEUR	MAX. LOAD* CHARGE MAX.*	PK PC	CASE CAISSE
4818226ABIPL	AB	Left Hand Main gauche	ANSI A156.1 Grade 3	2.5 mm	1/16"	4"	4"	60 lb (27 kg)	1	100
4818226ABIPR	AB	Right Hand Main droite	ANSI A156.1 Grade 3	2.5 mm	1/16"	4"	4"	60 lb (27 kg)	1	100
4818226ABKDS	AB	Non-Assembled Non assemblée	ANSI A156.1 Grade 3	2.5 mm	1/16"	4"	4"	60 lb (27 kg)	1	100
4818226ANIPL	AN	Left Hand Main gauche	ANSI A156.1 Grade 3	2.5 mm	1/16"	4"	4"	60 lb (27 kg)	1	100
4818226ANIPR	AN	Right Hand Main droite	ANSI A156.1 Grade 3	2.5 mm	1/16"	4"	4"	60 lb (27 kg)	1	100
4818226ANKDS	AN	Non-Assembled Non assemblée	ANSI A156.1 Grade 3	2.5 mm	1/16"	4"	4"	60 lb (27 kg)	1	100
4818226BIPL	B	Left Hand Main gauche	ANSI A156.1 Grade 3	2.5 mm	1/16"	4"	4"	60 lb (27 kg)	1	100
4818226BIPR	B	Right Hand Main droite	ANSI A156.1 Grade 3	2.5 mm	1/16"	4"	4"	60 lb (27 kg)	1	100
4818226BKDS	B	Non-Assembled Non assemblée	ANSI A156.1 Grade 3	2.5 mm	1/16"	4"	4"	60 lb (27 kg)	1	100
4818226BCIPL	BC	Left Hand Main gauche	ANSI A156.1 Grade 3	2.5 mm	1/16"	4"	4"	60 lb (27 kg)	1	100
4818226BCIPR	BC	Right Hand Main droite	ANSI A156.1 Grade 3	2.5 mm	1/16"	4"	4"	60 lb (27 kg)	1	100
4818226BCKDS	BC	Non-Assembled Non assemblée	ANSI A156.1 Grade 3	2.5 mm	1/16"	4"	4"	60 lb (27 kg)	1	100
4818226FBIPL	FB	Left Hand Main gauche	ANSI A156.1 Grade 3	2.5 mm	1/16"	4"	4"	60 lb (27 kg)	1	100
4818226FBIPR	FB	Right Hand Main droite	ANSI A156.1 Grade 3	2.5 mm	1/16"	4"	4"	60 lb (27 kg)	1	100
4818226NBIPL	NB	Left Hand Main gauche	ANSI A156.1 Grade 3	2.5 mm	1/16"	4"	4"	60 lb (27 kg)	1	100
4818226NBIPR	NB	Right Hand Main droite	ANSI A156.1 Grade 3	2.5 mm	1/16"	4"	4"	60 lb (27 kg)	1	100
4818226ORBIPL	ORB	Left Hand Main gauche	ANSI A156.1 Grade 3	2.5 mm	1/16"	4"	4"	60 lb (27 kg)	1	100
4818226ORBIPR	ORB	Right Hand Main droite	ANSI A156.1 Grade 3	2.5 mm	1/16"	4"	4"	60 lb (27 kg)	1	100
4818226ORBKDS	ORB	Non-Assembled Non assemblée	ANSI A156.1 Grade 3	2.5 mm	1/16"	4"	4"	60 lb (27 kg)	1	100
4818226WIPL	W	Left Hand Main gauche	ANSI A156.1 Grade 3	2.5 mm	1/16"	4"	4"	60 lb (27 kg)	1	100
4818226WIPR	W	Right Hand Main droite	ANSI A156.1 Grade 3	2.5 mm	1/16"	4"	4"	60 lb (27 kg)	1	100
4818226WKDS	W	Non-Assembled Non assemblée	ANSI A156.1 Grade 3	2.5 mm	1/16"	4"	4"	60 lb (27 kg)	1	100
4818226XIPL	X	Left Hand Main gauche	ANSI A156.1 Grade 3	2.5 mm	1/16"	4"	4"	60 lb (27 kg)	1	100
4818226XIPR	X	Right Hand Main droite	ANSI A156.1 Grade 3	2.5 mm	1/16"	4"	4"	60 lb (27 kg)	1	100
4818226XKDS	X	Non-Assembled Non assemblée	ANSI A156.1 Grade 3	2.5 mm	1/16"	4"	4"	60 lb (27 kg)	1	100

Residential - Exterior Butt Hinges Charnières extérieures - Résidentielles

Residential - Exterior Butt Hinges - Combination Charnières extérieures - Résidentielles - Combinées

- Non-Removable Pin
- Ball Bearing
- Screws Included
- Goupille non amovible
- Roulement à bille
- Vis incluses



4818226SNRPIPR

NO.	FINISH FINI	ASSEMBLY ASSEMBLÉE	STANDARDS NORMES	GAUGE ÉPAISSEUR	GAP ÉCART	WIDTH LARGEUR	HEIGHT HAUTEUR	MAX. LOAD* CHARGE MAX.*	PK PC	CASE CAISSE
4818226ABNRPIPL	AB	Left Hand Main gauche	ANSI A156.1 Grade 3	2.5 mm	1/16"	4"	4"	60 lb (27 kg)	1	100
4818226ABNRPIPR	AB	Right Hand Main droite	ANSI A156.1 Grade 3	2.5 mm	1/16"	4"	4"	60 lb (27 kg)	1	100
4818226ANNRPIPR	AN	Right Hand Main droite	ANSI A156.1 Grade 3	2.5 mm	1/16"	4"	4"	60 lb (27 kg)	1	100
4818226BNRPIPL	B	Left Hand Main gauche	ANSI A156.1 Grade 3	2.5 mm	1/16"	4"	4"	60 lb (27 kg)	1	100
4818226BNRPIPR	B	Right Hand Main droite	ANSI A156.1 Grade 3	2.5 mm	1/16"	4"	4"	60 lb (27 kg)	1	100
4818226BNRPKDS	B	Non-Assembled Non assemblée	ANSI A156.1 Grade 3	2.5 mm	1/16"	4"	4"	60 lb (27 kg)	1	100
4818226BCNRPKDS	BC	Non-Assembled Non assemblée	ANSI A156.1 Grade 3	2.5 mm	1/16"	4"	4"	60 lb (27 kg)	1	100
4818226FBNRPIPL	FB	Left Hand Main gauche	ANSI A156.1 Grade 3	2.5 mm	1/16"	4"	4"	60 lb (27 kg)	1	100
4818226FBNRPIPR	FB	Right Hand Main droite	ANSI A156.1 Grade 3	2.5 mm	1/16"	4"	4"	60 lb (27 kg)	1	100
4818226NBNRPIPL	NB	Left Hand Main gauche	ANSI A156.1 Grade 3	2.5 mm	1/16"	4"	4"	60 lb (27 kg)	1	100
4818226NBNRPIPR	NB	Right Hand Main droite	ANSI A156.1 Grade 3	2.5 mm	1/16"	4"	4"	60 lb (27 kg)	1	100
4818226NBNRPKDS	NB	Non-Assembled Non assemblée	ANSI A156.1 Grade 3	2.5 mm	1/16"	4"	4"	60 lb (27 kg)	1	100
4818226ORBNPIPL	ORB	Left Hand Main gauche	ANSI A156.1 Grade 3	2.5 mm	1/16"	4"	4"	60 lb (27 kg)	1	100
4818226ORBNPIPR	ORB	Right Hand Main droite	ANSI A156.1 Grade 3	2.5 mm	1/16"	4"	4"	60 lb (27 kg)	1	100
4818226ORBNPKDS	ORB	Non-Assembled Non assemblée	ANSI A156.1 Grade 3	2.5 mm	1/16"	4"	4"	60 lb (27 kg)	1	100
4818226SSNRPIPL	SS	Left Hand Main gauche	ANSI A156.1 Grade 3	2.5 mm	1/16"	4"	4"	60 lb (27 kg)	1	100
4818226SSNRPIPR	SS	Right Hand Main droite	ANSI A156.1 Grade 3	2.5 mm	1/16"	4"	4"	60 lb (27 kg)	1	100
4818226WNRPKDS	W	Non-Assembled Non assemblée	ANSI A156.1 Grade 3	2.5 mm	1/16"	4"	4"	60 lb (27 kg)	1	100
4818226XNRPKDS	X	Non-Assembled Non assemblée	ANSI A156.1 Grade 3	2.5 mm	1/16"	4"	4"	60 lb (27 kg)	1	100

Residential - Exterior Butt Hinges - Combination Charnières extérieures - Résidentielles - Combinées

- Removable Pin
- Ball Bearing
- Screws Included
- Goupille amovible
- Roulement à bille
- Vis incluses



4818228BIPL

NO.	FINISH FINI	ASSEMBLY ASSEMBLÉE	STANDARDS NORMES	GAUGE ÉPAISSEUR	GAP ÉCART	WIDTH LARGEUR	HEIGHT HAUTEUR	MAX. LOAD* CHARGE MAX.*	PK PC	CASE CAISSE
4818228ABIPL	AB	Left Hand Main gauche	ANSI A156.1 Grade 3	2.5 mm	1/8"	4"	4"	60 lb (27 kg)	1	100
4818228ABIPR	AB	Right Hand Main droite	ANSI A156.1 Grade 3	2.5 mm	1/8"	4"	4"	60 lb (27 kg)	1	100
4818228ABKDS	AB	Non-Assembled Non assemblée	ANSI A156.1 Grade 3	2.5 mm	1/8"	4"	4"	60 lb (27 kg)	1	100
4818228ANIPL	AN	Left Hand Main gauche	ANSI A156.1 Grade 3	2.5 mm	1/8"	4"	4"	60 lb (27 kg)	1	100
4818228ANIPR	AN	Right Hand Main droite	ANSI A156.1 Grade 3	2.5 mm	1/8"	4"	4"	60 lb (27 kg)	1	100
4818228ANKDS	AN	Non-Assembled Non assemblée	ANSI A156.1 Grade 3	2.5 mm	1/8"	4"	4"	60 lb (27 kg)	1	100
4818228BIPL	B	Left Hand Main gauche	ANSI A156.1 Grade 3	2.5 mm	1/8"	4"	4"	60 lb (27 kg)	1	100
4818228BIPR	B	Right Hand Main droite	ANSI A156.1 Grade 3	2.5 mm	1/8"	4"	4"	60 lb (27 kg)	1	100
4818228BKDS	B	Non-Assembled Non assemblée	ANSI A156.1 Grade 3	2.5 mm	1/8"	4"	4"	60 lb (27 kg)	1	100
4818228BCIPL	BC	Left Hand Main gauche	ANSI A156.1 Grade 3	2.5 mm	1/8"	4"	4"	60 lb (27 kg)	1	100
4818228BCIPR	BC	Right Hand Main droite	ANSI A156.1 Grade 3	2.5 mm	1/8"	4"	4"	60 lb (27 kg)	1	100
4818228BCKDS	BC	Non-Assembled Non assemblée	ANSI A156.1 Grade 3	2.5 mm	1/8"	4"	4"	60 lb (27 kg)	1	100
4818228CIPL	C	Left Hand Main gauche	ANSI A156.1 Grade 3	2.5 mm	1/8"	4"	4"	60 lb (27 kg)	1	100
4818228CIPR	C	Right Hand Main droite	ANSI A156.1 Grade 3	2.5 mm	1/8"	4"	4"	60 lb (27 kg)	1	100
4818228CKDS	C	Non-Assembled Non assemblée	ANSI A156.1 Grade 3	2.5 mm	1/8"	4"	4"	60 lb (27 kg)	1	100
4818228FBIPL	FB	Left Hand Main gauche	ANSI A156.1 Grade 3	2.5 mm	1/8"	4"	4"	60 lb (27 kg)	1	100
4818228FBIPR	FB	Right Hand Main droite	ANSI A156.1 Grade 3	2.5 mm	1/8"	4"	4"	60 lb (27 kg)	1	100
4818228FBKDS	FB	Non-Assembled Non assemblée	ANSI A156.1 Grade 3	2.5 mm	1/8"	4"	4"	60 lb (27 kg)	1	100
4818228NBIPL	NB	Left Hand Main gauche	ANSI A156.1 Grade 3	2.5 mm	1/8"	4"	4"	60 lb (27 kg)	1	100
4818228NBIPR	NB	Right Hand Main droite	ANSI A156.1 Grade 3	2.5 mm	1/8"	4"	4"	60 lb (27 kg)	1	100
4818228NBKDS	NB	Non-Assembled Non assemblée	ANSI A156.1 Grade 3	2.5 mm	1/8"	4"	4"	60 lb (27 kg)	1	100
4818228ORBIPL	ORB	Left Hand Main gauche	ANSI A156.1 Grade 3	2.5 mm	1/8"	4"	4"	60 lb (27 kg)	1	100
4818228ORBIPR	ORB	Right Hand Main droite	ANSI A156.1 Grade 3	2.5 mm	1/8"	4"	4"	60 lb (27 kg)	1	100
4818228ORBKDS	ORB	Non-Assembled Non assemblée	ANSI A156.1 Grade 3	2.5 mm	1/8"	4"	4"	60 lb (27 kg)	1	100
4818228SSIPL	SS	Left Hand Main gauche	ANSI A156.1 Grade 3	2.5 mm	1/8"	4"	4"	60 lb (27 kg)	1	100
4818228SSIPR	SS	Right Hand Main droite	ANSI A156.1 Grade 3	2.5 mm	1/8"	4"	4"	60 lb (27 kg)	1	100
4818228WIPL	W	Left Hand Main gauche	ANSI A156.1 Grade 3	2.5 mm	1/8"	4"	4"	60 lb (27 kg)	1	100
4818228WIPR	W	Right Hand Main droite	ANSI A156.1 Grade 3	2.5 mm	1/8"	4"	4"	60 lb (27 kg)	1	100
4818228WKDS	W	Non-Assembled Non assemblée	ANSI A156.1 Grade 3	2.5 mm	1/8"	4"	4"	60 lb (27 kg)	1	100
4818228XIPL	X	Left Hand Main gauche	ANSI A156.1 Grade 3	2.5 mm	1/8"	4"	4"	60 lb (27 kg)	1	100
4818228XIPR	X	Right Hand Main droite	ANSI A156.1 Grade 3	2.5 mm	1/8"	4"	4"	60 lb (27 kg)	1	100
4818228XKDS	X	Non-Assembled Non assemblée	ANSI A156.1 Grade 3	2.5 mm	1/8"	4"	4"	60 lb (27 kg)	1	100

Residential - Exterior Butt Hinges Charnières extérieures - Résidentielles

Residential - Exterior Butt Hinges - Combination Charnières extérieures - Résidentielles - Combinées

- Non-Removable Pin
- Ball Bearing
- Screws Included
- Goupille non amovible
- Roulement à bille
- Vis incluses



4818228BNBIPL

NO.	FINISH FINI	ASSEMBLY ASSEMBLÉE	STANDARDS NORMES	GAUGE ÉPAISSEUR	GAP ÉCART	WIDTH LARGEUR	HEIGHT HAUTEUR	MAX. LOAD* CHARGE MAX.*	PK PC	CASE CAISSE
4818228ABNRPIPL	AB	Left Hand Main gauche	ANSI A156.1 Grade 3	2.5 mm	1/8"	4"	4"	60 lb (27 kg)	1	100
4818228ABNRPIPR	AB	Right Hand Main droite	ANSI A156.1 Grade 3	2.5 mm	1/8"	4"	4"	60 lb (27 kg)	1	100
4818228ABNRPKDS	AB	Non-Assembled Non assemblée	ANSI A156.1 Grade 3	2.5 mm	1/8"	4"	4"	60 lb (27 kg)	1	100
4818228ANNRPIPL	AN	Left Hand Main gauche	ANSI A156.1 Grade 3	2.5 mm	1/8"	4"	4"	60 lb (27 kg)	1	100
4818228ANNRPIPR	AN	Right Hand Main droite	ANSI A156.1 Grade 3	2.5 mm	1/8"	4"	4"	60 lb (27 kg)	1	100
4818228ANNRPKDS	AN	Non-Assembled Non assemblée	ANSI A156.1 Grade 3	2.5 mm	1/8"	4"	4"	60 lb (27 kg)	1	100
4818228BNRPIPL	B	Left Hand Main gauche	ANSI A156.1 Grade 3	2.5 mm	1/8"	4"	4"	60 lb (27 kg)	1	100
4818228BNRPIPR	B	Right Hand Main droite	ANSI A156.1 Grade 3	2.5 mm	1/8"	4"	4"	60 lb (27 kg)	1	100
4818228BNRPKDS	B	Non-Assembled Non assemblée	ANSI A156.1 Grade 3	2.5 mm	1/8"	4"	4"	60 lb (27 kg)	1	100
4818228BCNRPIPL	BC	Left Hand Main gauche	ANSI A156.1 Grade 3	2.5 mm	1/8"	4"	4"	60 lb (27 kg)	1	100
4818228BCNRPIPR	BC	Right Hand Main droite	ANSI A156.1 Grade 3	2.5 mm	1/8"	4"	4"	60 lb (27 kg)	1	100
4818228BCNRPKDS	BC	Non-Assembled Non assemblée	ANSI A156.1 Grade 3	2.5 mm	1/8"	4"	4"	60 lb (27 kg)	1	100
4818228BCHNPIPL	BCH	Left Hand Main gauche	ANSI A156.1 Grade 3	2.5 mm	1/8"	4"	4"	60 lb (27 kg)	1	100
4818228BCHNPIPR	BCH	Right Hand Main droite	ANSI A156.1 Grade 3	2.5 mm	1/8"	4"	4"	60 lb (27 kg)	1	100
4818228BSNRPKDS	BS	Non-Assembled Non assemblée	ANSI A156.1 Grade 3	2.5 mm	1/8"	4"	4"	60 lb (27 kg)	1	100
4818228CNRPIPL	C	Left Hand Main gauche	ANSI A156.1 Grade 3	2.5 mm	1/8"	4"	4"	60 lb (27 kg)	1	100
4818228CNRPIPR	C	Right Hand Main droite	ANSI A156.1 Grade 3	2.5 mm	1/8"	4"	4"	60 lb (27 kg)	1	100
4818228CNRPKDS	C	Non-Assembled Non assemblée	ANSI A156.1 Grade 3	2.5 mm	1/8"	4"	4"	60 lb (27 kg)	1	100
4818228FBNRPIPL	FB	Left Hand Main gauche	ANSI A156.1 Grade 3	2.5 mm	1/8"	4"	4"	60 lb (27 kg)	1	100
4818228FBNRPIPR	FB	Right Hand Main droite	ANSI A156.1 Grade 3	2.5 mm	1/8"	4"	4"	60 lb (27 kg)	1	100
4818228FBNRPKDS	FB	Non-Assembled Non assemblée	ANSI A156.1 Grade 3	2.5 mm	1/8"	4"	4"	60 lb (27 kg)	1	100
4818228NBNRPIPL	NB	Left Hand Main gauche	ANSI A156.1 Grade 3	2.5 mm	1/8"	4"	4"	60 lb (27 kg)	1	100
4818228NBNRPIPR	NB	Right Hand Main droite	ANSI A156.1 Grade 3	2.5 mm	1/8"	4"	4"	60 lb (27 kg)	1	100
4818228NBNRPKDS	NB	Non-Assembled Non assemblée	ANSI A156.1 Grade 3	2.5 mm	1/8"	4"	4"	60 lb (27 kg)	1	100
4818228ORBNPIPL	ORB	Left Hand Main gauche	ANSI A156.1 Grade 3	2.5 mm	1/8"	4"	4"	60 lb (27 kg)	1	100
4818228ORBNPIPR	ORB	Right Hand Main droite	ANSI A156.1 Grade 3	2.5 mm	1/8"	4"	4"	60 lb (27 kg)	1	100
4818228ORBNPKDS	ORB	Non-Assembled Non assemblée	ANSI A156.1 Grade 3	2.5 mm	1/8"	4"	4"	60 lb (27 kg)	1	100
4818228ORNPKDSS*	ORB	Non-Assembled Non assemblée	ANSI A156.1 Grade 3	2.5 mm	1/8"	4"	4"	60 lb (27 kg)	1	100
4818228SSNRPIPL	SS	Left Hand Main gauche	ANSI A156.1 Grade 3	2.5 mm	1/8"	4"	4"	60 lb (27 kg)	1	100
4818228SSNRPIPR	SS	Right Hand Main droite	ANSI A156.1 Grade 3	2.5 mm	1/8"	4"	4"	60 lb (27 kg)	1	100
4818228SSNRPKDS	SS	Non-Assembled Non assemblée	ANSI A156.1 Grade 3	2.5 mm	1/8"	4"	4"	60 lb (27 kg)	1	100
4818228WNRPIPL	W	Left Hand Main gauche	ANSI A156.1 Grade 3	2.5 mm	1/8"	4"	4"	60 lb (27 kg)	1	100
4818228WNRPIPR	W	Right Hand Main droite	ANSI A156.1 Grade 3	2.5 mm	1/8"	4"	4"	60 lb (27 kg)	1	100
4818228WNRPKDS	W	Non-Assembled Non assemblée	ANSI A156.1 Grade 3	2.5 mm	1/8"	4"	4"	60 lb (27 kg)	1	100
4818228XNRPIPL	X	Left Hand Main gauche	ANSI A156.1 Grade 3	2.5 mm	1/8"	4"	4"	60 lb (27 kg)	1	100
4818228XNRPIPR	X	Right Hand Main droite	ANSI A156.1 Grade 3	2.5 mm	1/8"	4"	4"	60 lb (27 kg)	1	100
4818228XNRPKDS	X	Non-Assembled Non assemblée	ANSI A156.1 Grade 3	2.5 mm	1/8"	4"	4"	60 lb (27 kg)	1	100

Residential - Exterior Butt Hinges - Combination Charnières extérieures - Résidentielles - Combinées

- Removable Pin
- Non-Ball Bearing
- Screws Included
- Goupille amovible
- Non roulement à bille
- Vis incluses



818226BCIPL

NO.	FINISH FINI	ASSEMBLY ASSEMBLÉE	GAUGE ÉPAISSEUR	GAP ÉCART	WIDTH LARGEUR	HEIGHT HAUTEUR	PK PC	CASE CAISSE
818226ANIPL	AN	Left Hand Main gauche	2.5 mm	1/16"	4"	4"	1	100
818226ANIPR	AN	Right Hand Main droite	2.5 mm	1/16"	4"	4"	1	100
818226ANKDS	AN	Non-Assembled Non assemblée	2.5 mm	1/16"	4"	4"	1	100
818226BIPL	B	Left Hand Main gauche	2.5 mm	1/16"	4"	4"	1	100
818226BIPR	B	Right Hand Main droite	2.5 mm	1/16"	4"	4"	1	100
818226BKDS	B	Non-Assembled Non assemblée	2.5 mm	1/16"	4"	4"	1	100
818226BCIPL	BC	Left Hand Main gauche	2.5 mm	1/16"	4"	4"	1	100
818226BCIPR	BC	Right Hand Main droite	2.5 mm	1/16"	4"	4"	1	100
818226BCKDS	BC	Non-Assembled Non assemblée	2.5 mm	1/16"	4"	4"	1	100
818226FBIPL	FB	Left Hand Main gauche	2.5 mm	1/16"	4"	4"	1	100
818226FBIPR	FB	Right Hand Main droite	2.5 mm	1/16"	4"	4"	1	100
818226FBKDS	FB	Non-Assembled Non assemblée	2.5 mm	1/16"	4"	4"	1	100
818226NBIPL	NB	Left Hand Main gauche	2.5 mm	1/16"	4"	4"	1	100
818226NBIPR	NB	Right Hand Main droite	2.5 mm	1/16"	4"	4"	1	100
818226ORBKDS	ORB	Non-Assembled Non assemblée	2.5 mm	1/16"	4"	4"	1	100
818226WIPL	W	Left Hand Main gauche	2.5 mm	1/16"	4"	4"	1	100
818226WIPR	W	Right Hand Main droite	2.5 mm	1/16"	4"	4"	1	100
818226WKDS	W	Non-Assembled Non assemblée	2.5 mm	1/16"	4"	4"	1	100
818226XIPL	X	Left Hand Main gauche	2.5 mm	1/16"	4"	4"	1	100
818226XIPLS*	X	Left Hand Main gauche	2.5 mm	1/16"	4"	4"	1	100
818226XIPR	X	Right Hand Main droite	2.5 mm	1/16"	4"	4"	1	100
818226XIPRS*	X	Right Hand Main droite	2.5 mm	1/16"	4"	4"	1	100
818226XKDS	X	Non-Assembled Non assemblée	2.5 mm	1/16"	4"	4"	1	100

Residential - Exterior Butt Hinges - Combination Charnières extérieures - Résidentielles - Combinées

- Non-Removable Pin
- Non-Ball Bearing
- Screws Included
- Goupille non amovible
- Non roulement à bille
- Vis incluses



818226SSNRPIPR

NO.	FINISH FINI	ASSEMBLY ASSEMBLÉE	GAUGE ÉPAISSEUR	GAP ÉCART	WIDTH LARGEUR	HEIGHT HAUTEUR	PK PC	CASE CAISSE
818226ABNRPIPL	AB	Left Hand Main gauche	2.5 mm	1/16"	4"	4"	1	100
818226ABNRPIPR	AB	Right Hand Main droite	2.5 mm	1/16"	4"	4"	1	100
818226ABNRPKDS	AB	Non-Assembled Non assemblée	2.5 mm	1/16"	4"	4"	1	100
818226ANNRPIPL	AN	Left Hand Main gauche	2.5 mm	1/16"	4"	4"	1	100
818226ANNRPIPR	AN	Right Hand Main droite	2.5 mm	1/16"	4"	4"	1	100
818226ANNRPKDS	AN	Non-Assembled Non assemblée	2.5 mm	1/16"	4"	4"	1	100
818226BNRPIPL	B	Left Hand Main gauche	2.5 mm	1/16"	4"	4"	1	100
818226BNRPIPR	B	Right Hand Main droite	2.5 mm	1/16"	4"	4"	1	100
818226BNRPKDS	B	Non-Assembled Non assemblée	2.5 mm	1/16"	4"	4"	1	100
818226BCNRPKDS	BC	Non-Assembled Non assemblée	2.5 mm	1/16"	4"	4"	1	100
818226FBNRPIPR	FB	Right Hand Main droite	2.5 mm	1/16"	4"	4"	1	100
818226FBNRPKDS	FB	Non-Assembled Non assemblée	2.5 mm	1/16"	4"	4"	1	100
818226NBNRPIPL	NB	Left Hand Main gauche	2.5 mm	1/16"	4"	4"	1	100
818226NBNRPIPR	NB	Right Hand Main droite	2.5 mm	1/16"	4"	4"	1	100
818226NBNRPKDS	NB	Non-Assembled Non assemblée	2.5 mm	1/16"	4"	4"	1	100
818226ORB	ORB	Non-Assembled Non assemblée	2.5 mm	1/16"	4"	4"	1	100
818226SSNRPIPL	SS	Left Hand Main gauche	2.5 mm	1/16"	4"	4"	1	100
818226SSNRPIPR	SS	Right Hand Main droite	2.5 mm	1/16"	4"	4"	1	100
818226WNRPIPL	W	Left Hand Main gauche	2.5 mm	1/16"	4"	4"	1	100
818226WNRPIPR	W	Right Hand Main droite	2.5 mm	1/16"	4"	4"	1	100
818226XNRPIPL	X	Left Hand Main gauche	2.5 mm	1/16"	4"	4"	1	100
818226XNRPIPR	X	Right Hand Main droite	2.5 mm	1/16"	4"	4"	1	100
818226XNRPKDS	X	Non-Assembled Non assemblée	2.5 mm	1/16"	4"	4"	1	100

Residential - Exterior Butt Hinges - Combination Charnières extérieures - Résidentielles - Combinées

- Removable Pin
- Non-Ball Bearing
- Screws Included
- Goupille amovible
- Non roulement à bille
- Vis incluses



818228SSKDS

NO.	FINISH FINI	ASSEMBLY ASSEMBLÉE	GAUGE ÉPAISSEUR	GAP ÉCART	WIDTH LARGEUR	HEIGHT HAUTEUR	PK PC	CASE CAISSE
818228ABIPL	AB	Left Hand Main gauche	2.5 mm	1/8"	4"	4"	1	100
818228ABIPR	AB	Right Hand Main droite	2.5 mm	1/8"	4"	4"	1	100
818228ABKDS	AB	Non-Assembled Non assemblée	2.5 mm	1/8"	4"	4"	1	100
818228ANIPL	AN	Left Hand Main gauche	2.5 mm	1/8"	4"	4"	1	100
818228ANIPR	AN	Right Hand Main droite	2.5 mm	1/8"	4"	4"	1	100
818228ANKDS	AN	Non-Assembled Non assemblée	2.5 mm	1/8"	4"	4"	1	100
818228BCIPL	BC	Left Hand Main gauche	2.5 mm	1/8"	4"	4"	1	100
818228BCIPR	BC	Right Hand Main droite	2.5 mm	1/8"	4"	4"	1	100
818228BCKDS	BC	Non-Assembled Non assemblée	2.5 mm	1/8"	4"	4"	1	100
818228FBIPL	FB	Left Hand Main gauche	2.5 mm	1/8"	4"	4"	1	100
818228FBIPR	FB	Right Hand Main droite	2.5 mm	1/8"	4"	4"	1	100
818228FBKDS	FB	Non-Assembled Non assemblée	2.5 mm	1/8"	4"	4"	1	100
818228NBIPL	NB	Left Hand Main gauche	2.5 mm	1/8"	4"	4"	1	100
818228NBIPR	NB	Right Hand Main droite	2.5 mm	1/8"	4"	4"	1	100
818228NBKDS	NB	Non-Assembled Non assemblée	2.5 mm	1/8"	4"	4"	1	100
818228ORBIPL	ORB	Left Hand Main gauche	2.5 mm	1/8"	4"	4"	1	100
818228ORBIPR	ORB	Right Hand Main droite	2.5 mm	1/8"	4"	4"	1	100
818228ORBKDS	ORB	Non-Assembled Non assemblée	2.5 mm	1/8"	4"	4"	1	100
818228SSKDS	SS	Non-Assembled Non assemblée	2.5 mm	1/8"	4"	4"	1	100
818228WIPL	W	Left Hand Main gauche	2.5 mm	1/8"	4"	4"	1	100
818228WIPR	W	Right Hand Main droite	2.5 mm	1/8"	4"	4"	1	100
818228WKDS	W	Non-Assembled Non assemblée	2.5 mm	1/8"	4"	4"	1	100
818228XIPL	X	Left Hand Main gauche	2.5 mm	1/8"	4"	4"	1	100
818228XIPR	X	Right Hand Main droite	2.5 mm	1/8"	4"	4"	1	100
818228XKDS	X	Non-Assembled Non assemblée	2.5 mm	1/8"	4"	4"	1	100
818228YZKDS	X	Non-Assembled Non assemblée	2.5 mm	1/8"	4"	4"	1	100

Residential - Exterior Butt Hinges - Combination Charnières extérieures - Résidentielles - Combinées

- Non-Removable Pin
- Non-Ball Bearing
- Screws Included
- Goupille non amovible
- Non roulement à bille
- Vis incluses



818228CNRPKDS

NO.	FINISH FINI	ASSEMBLY ASSEMBLÉE	GAUGE ÉPAISSEUR	GAP ÉCART	WIDTH LARGEUR	HEIGHT HAUTEUR	PK PC	CASE CAISSE
818228ABNRPIPL	AB	Left Hand Main gauche	2.5 mm	1/8"	4"	4"	1	100
818228ABNRPIPR	AB	Right Hand Main droite	2.5 mm	1/8"	4"	4"	1	100
818228ABNRPKDS	AB	Non-Assembled Non assemblée	2.5 mm	1/8"	4"	4"	1	100
818228ANNRPIPL	AN	Left Hand Main gauche	2.5 mm	1/8"	4"	4"	1	100
818228ANNRPIPR	AN	Right Hand Main droite	2.5 mm	1/8"	4"	4"	1	100
818228ANNRPKDS	AN	Non-Assembled Non assemblée	2.5 mm	1/8"	4"	4"	1	100
818228BNRPKDS	B	Non-Assembled Non assemblée	2.5 mm	1/8"	4"	4"	1	100
818228BCNRPKDS	BC	Non-Assembled Non assemblée	2.5 mm	1/8"	4"	4"	1	100
818228BSNRPKDS	BS	Non-Assembled Non assemblée	2.5 mm	1/8"	4"	4"	1	100
818228CNRPKDS	C	Non-Assembled Non assemblée	2.5 mm	1/8"	4"	4"	1	100
818228FBNRPIPL	FB	Left Hand Main gauche	2.5 mm	1/8"	4"	4"	1	100
818228FBNRPIPR	FB	Right Hand Main droite	2.5 mm	1/8"	4"	4"	1	100
818228FBNRPKDS	FB	Non-Assembled Non assemblée	2.5 mm	1/8"	4"	4"	1	100
818228NBNRPIPL	NB	Left Hand Main gauche	2.5 mm	1/8"	4"	4"	1	100
818228NBNRPIPR	NB	Right Hand Main droite	2.5 mm	1/8"	4"	4"	1	100
818228NBNRPKDS	NB	Non-Assembled Non assemblée	2.5 mm	1/8"	4"	4"	1	100
818228ORBNRPIPR	ORB	Right Hand Main droite	2.5 mm	1/8"	4"	4"	1	100
818228ORBNRPKDS	ORB	Non-Assembled Non assemblée	2.5 mm	1/8"	4"	4"	1	100
818228SSNRPIPL	SS	Left Hand Main gauche	2.5 mm	1/8"	4"	4"	1	100
818228SSNRPIPR	SS	Right Hand Main droite	2.5 mm	1/8"	4"	4"	1	100
818228SSNRPKDS	SS	Non-Assembled Non assemblée	2.5 mm	1/8"	4"	4"	1	100
818228WNRPIPL	W	Left Hand Main gauche	2.5 mm	1/8"	4"	4"	1	100
818228WNRPIPR	W	Right Hand Main droite	2.5 mm	1/8"	4"	4"	1	100
818228WNRPKDS	W	Non-Assembled Non assemblée	2.5 mm	1/8"	4"	4"	1	100
818228XNRPIPL	X	Left Hand Main gauche	2.5 mm	1/8"	4"	4"	1	100
818228XNRPIPR	X	Right Hand Main droite	2.5 mm	1/8"	4"	4"	1	100
818228XNRPKDS	X	Non-Assembled Non assemblée	2.5 mm	1/8"	4"	4"	1	100
818228XNRPKDSS*	X	Non-Assembled Non assemblée	2.5 mm	1/8"	4"	4"	1	100
818228YZNRPKDS	YZ	Non-Assembled Non assemblée	2.5 mm	1/8"	4"	4"	1	100
818228YZNRPKDSS*	YZ	Non-Assembled Non assemblée	2.5 mm	1/8"	4"	4"	1	100

Residential - Exterior Butt Hinges - Combination Charnières extérieures - Résidentielles - Combinées

- Non-Ball Bearing
- Screws Included
- Non roulement à bille
- Vis incluses

NO.	FINISH FINI	PIN GOUPILLE	ASSEMBLY ASSEMBLÉE	GAUGE ÉPAISSEUR	GAP ÉCART	WIDTH LARGEUR	HEIGHT HAUTEUR	PK PC	BOX BTE	CASE CAISSE
H188	W	Non-Removable Non amovible	Non-Assembled Non assemblée	2.5 mm	1/8"	4"	4"	2	1	50
H188AD	W	Non-Removable Non amovible	Right Hand Main droite	2.5 mm	1/8"	4"	4"	2	1	50
H188AG	W	Non-Removable Non amovible	Left Hand Main gauche	2.5 mm	1/8"	4"	4"	2	1	50
H198	X	Non-Removable Non amovible	Non-Assembled Non assemblée	2.5 mm	1/8"	4"	4"	2	1	50
H198AD	X	Non-Removable Non amovible	Right Hand Main droite	2.5 mm	1/8"	4"	4"	2	1	50
H198AG	X	Non-Removable Non amovible	Left Hand Main gauche	2.5 mm	1/8"	4"	4"	2	1	50
H21A	X	Non-Removable Non amovible	Assembled Assemblée	2.5 mm	1/8"	4"	4"	2	1	50
H298	SC	Non-Removable Non amovible	Non-Assembled Non assemblée	2.5 mm	1/8"	4"	4"	2	1	50
H258	X	Removable Amovible	Non-Assembled Non assemblée	2.5 mm	1/8"	4"	4"	2	1	50
H258AD	X	Removable Amovible	Right Hand Main droite	2.5 mm	1/8"	4"	4"	2	1	50
H258AG	X	Removable Amovible	Left Hand Main gauche	2.5 mm	1/8"	4"	4"	2	1	50
H268	SC	Removable Amovible	Non-Assembled Non assemblée	2.5 mm	1/8"	4"	4"	2	1	50
H328AD	W	Removable Amovible	Right Hand Main droite	2.5 mm	1/8"	4"	4"	2	1	50
H328AG	W	Removable Amovible	Left Hand Main gauche	2.5 mm	1/8"	4"	4"	2	1	50



H258

Residential - Exterior Butt Hinges - Anti-Theft - Combination Charnières extérieures - Résidentielles - Antivol - Combinées

- Ball Bearing
- Non-Assembled
- Roulement à bille
- Non assemblée

NO.	FINISH FINI	PIN GOUPILLE	GAUGE ÉPAISSEUR	GAP ÉCART	WIDTH LARGEUR	HEIGHT HAUTEUR	PK PC	CASE CAISSE
BBAV078	B	Non-Removable Non amovible	2.5 mm	1/8"	4"	4"	2	50
BBAV138	SC	Non-Removable Non amovible	2.5 mm	1/8"	4"	4"	2	50
H24	X	Removable Amovible	2.5 mm	1/16"	4"	4"	2	50



BBAV078

Residential - Exterior Butt Hinges - Half Hinges Charnières extérieures - Résidentielles - Demi-charnières

NO.	FINISH FINI	CORNER TYPE TYPE DE COINS	GAUGE ÉPAISSEUR	GAP ÉCART	WIDTH LARGEUR	HEIGHT HAUTEUR	PK PC	BOX BTE	CASE CAISSE
818228XKD1A	X	5/8" Radius Rayon de 5/8 po	2.5 mm	-	2"	4"	1	-	100
818228XKD1B	X	Square Carré	2.5 mm	-	2"	4"	1	-	100
H39	X	Square Carré	2.5 mm	-	2"	4"	2	1	50
H41	YZ	Square Carré	2.5 mm	-	2"	4"	2	1	50



818228XKD1A



818228XKD1B

Residential - Interior Butt Hinges Charnières intérieures - Résidentielles

Residential - Interior Butt Hinges - Square Charnières intérieures - Résidentielles - Carrées

- Removable Pin
- Non-Ball Bearing
- Assembled
- Screws Included
- Goupille amovible
- Non roulement à bille
- Assemblée
- Vis incluses

NO.	FINISH FINI	GAUGE ÉPAISSEUR	GAP ÉCART	WIDTH LARGEUR	HEIGHT HAUTEUR	MAX. LOAD* CHARGE MAX.*	PK PC	BOX BTE	CASE CAISSE
820ABB	AB	2 mm	1/16"	3"	3"	40 lb (18 kg)	2	5	50
820ABV	AB	2 mm	1/16"	3"	3"	40 lb (18 kg)	1	10	100
820ACBB	ACB	2 mm	1/16"	3"	3"	40 lb (18 kg)	2	5	50
820ANB	AN	2 mm	1/16"	3"	3"	40 lb (18 kg)	2	5	50
820ANV	AN	2 mm	1/16"	3"	3"	40 lb (18 kg)	1	10	100
820BB	B	2 mm	1/16"	3"	3"	40 lb (18 kg)	2	5	50
820BE	B	2 mm	1/16"	3"	3"	40 lb (18 kg)	12	1	5
820BV	B	2 mm	1/16"	3"	3"	40 lb (18 kg)	1	10	100
820BCB	BC	2 mm	1/16"	3"	3"	40 lb (18 kg)	2	5	50
820BCV	BC	2 mm	1/16"	3"	3"	40 lb (18 kg)	1	10	100
820CB	C	2 mm	1/16"	3"	3"	40 lb (18 kg)	2	5	50
820CV	C	2 mm	1/16"	3"	3"	40 lb (18 kg)	1	10	100
820FBB	FB	2 mm	1/16"	3"	3"	40 lb (18 kg)	2	5	50
820FBV	FB	2 mm	1/16"	3"	3"	40 lb (18 kg)	1	10	100
820NBB	NB	2 mm	1/16"	3"	3"	40 lb (18 kg)	2	5	50
820NBV	NB	2 mm	1/16"	3"	3"	40 lb (18 kg)	1	10	100
820ORBB	ORB	2 mm	1/16"	3"	3"	40 lb (18 kg)	2	5	50
820ORBV	ORB	2 mm	1/16"	3"	3"	40 lb (18 kg)	1	10	100
820SSB	SS	2 mm	1/16"	3"	3"	40 lb (18 kg)	2	5	50
820WB	W	2 mm	1/16"	3"	3"	40 lb (18 kg)	2	5	50
820WV	W	2 mm	1/16"	3"	3"	40 lb (18 kg)	1	10	100
821ABB	AB	2.2 mm	1/16"	3-1/2"	3-1/2"	45 lb (20 kg)	2	5	50
821ACBB	ACB	2.2 mm	1/16"	3-1/2"	3-1/2"	45 lb (20 kg)	2	5	50
821ANB	AN	2.2 mm	1/16"	3-1/2"	3-1/2"	45 lb (20 kg)	2	5	50
821ANV	AN	2.2 mm	1/16"	3-1/2"	3-1/2"	45 lb (20 kg)	1	10	100
821BB	B	2.2 mm	1/16"	3-1/2"	3-1/2"	45 lb (20 kg)	2	5	50
821BE	B	2.2 mm	1/16"	3-1/2"	3-1/2"	45 lb (20 kg)	12	1	5
821BV	B	2.2 mm	1/16"	3-1/2"	3-1/2"	45 lb (20 kg)	1	10	100
821BCB	BC	2.2 mm	1/16"	3-1/2"	3-1/2"	45 lb (20 kg)	2	5	50
821BCV	BC	2.2 mm	1/16"	3-1/2"	3-1/2"	45 lb (20 kg)	1	10	100
821CB	C	2.2 mm	1/16"	3-1/2"	3-1/2"	45 lb (20 kg)	2	5	50
821CV	C	2.2 mm	1/16"	3-1/2"	3-1/2"	45 lb (20 kg)	1	10	100
821FBB	FB	2.2 mm	1/16"	3-1/2"	3-1/2"	45 lb (20 kg)	2	5	50
821FBV	FB	2.2 mm	1/16"	3-1/2"	3-1/2"	45 lb (20 kg)	1	10	100
821NBB	NB	2.2 mm	1/16"	3-1/2"	3-1/2"	45 lb (20 kg)	2	5	50
821NBV	NB	2.2 mm	1/16"	3-1/2"	3-1/2"	45 lb (20 kg)	1	10	100
821ORBB	ORB	2.2 mm	1/16"	3-1/2"	3-1/2"	45 lb (20 kg)	2	5	50
821ORBV	ORB	2.2 mm	1/16"	3-1/2"	3-1/2"	45 lb (20 kg)	1	10	100
821SSB	SS	2.2 mm	1/16"	3-1/2"	3-1/2"	45 lb (20 kg)	2	5	50
821WB	W	2.2 mm	1/16"	3-1/2"	3-1/2"	45 lb (20 kg)	2	5	50



820ABB



821FBB

Residential - Interior Butt Hinges - Square Charnières intérieures - Résidentielles - Carrées

- Assembled
- Assemblée

NO.	FINISH FINI	PIN GOUILLE	STYLE	GAUGE ÉPAISSEUR	GAP ÉCART	WIDTH LARGEUR	HEIGHT HAUTEUR	SCREWS VIS	PK PC	BOX BTE	CASE CAISSE
827FBR	FB	Removable Amovible	Non-ball Bearing Non roulement à bille	2 mm	1/8"	3"	3"	Included Inclues	2	5	25
827GAR	GA	Removable Amovible	Non-ball Bearing Non roulement à bille	2 mm	1/8"	3"	3"	Included Inclues	2	5	25
827SSV	SS	Removable Amovible	Non-ball Bearing Non roulement à bille	2 mm	1/8"	3"	3"	Included Inclues	2	10	100
827XB	X	Removable Amovible	Non-ball Bearing Non roulement à bille	2 mm	1/8"	3"	3"	Not Included Non inclues	1	10	100
827XBC	X	Removable Amovible	Non-ball Bearing Non roulement à bille	2 mm	1/8"	3"	3"	Not Included Non inclues	1	10	100
827XV	X	Removable Amovible	Non-ball Bearing Non roulement à bille	2 mm	1/8"	3"	3"	Included Inclues	2	10	50
2827XB	X	Non-Removable Non amovible	Non-ball Bearing Non roulement à bille	2.2 mm	1/16"	3-1/2"	3-1/2"	Not Included Non inclues	1	20	100
2827XV	X	Non-Removable Non amovible	Non-ball Bearing Non roulement à bille	2.2 mm	1/16"	3-1/2"	3-1/2"	Included Inclues	2	10	50
828CBXV	CBX	Removable Amovible	Non-ball Bearing Non roulement à bille	2.2 mm	1/16"	3-1/2"	3-1/2"	Included Inclues	2	10	50
828FBR	FB	Removable Amovible	Non-ball Bearing Non roulement à bille	2.2 mm	1/16"	3-1/2"	3-1/2"	Included Inclues	2	5	25
828GAR	GA	Removable Amovible	Non-ball Bearing Non roulement à bille	2.2 mm	1/16"	3-1/2"	3-1/2"	Included Inclues	2	5	25
828SSV	SS	Removable Amovible	Non-ball Bearing Non roulement à bille	2.2 mm	1/16"	3-1/2"	3-1/2"	Included Inclues	2	10	50
828XB	X	Removable Amovible	Non-ball Bearing Non roulement à bille	2.2 mm	1/16"	3-1/2"	3-1/2"	Not Included Non inclues	1	10	100
828XBC	X	Removable Amovible	Non-ball Bearing Non roulement à bille	2.2 mm	1/16"	3-1/2"	3-1/2"	Not Included Non inclues	1	10	100
828XV	X	Removable Amovible	Non-ball Bearing Non roulement à bille	2.2 mm	1/16"	3-1/2"	3-1/2"	Included Inclues	2	10	50
2828XB	X	Non-Removable Non amovible	Non-ball Bearing Non roulement à bille	2.2 mm	1/16"	3-1/2"	3-1/2"	Not Included Non inclues	1	20	100
2828XV	X	Non-Removable Non amovible	Non-ball Bearing Non roulement à bille	2.2 mm	1/16"	3-1/2"	3-1/2"	Included Inclues	2	10	50
4821CB	C	Non-Removable Non amovible	Ball Bearing Roulement à bille	3.1 mm	1/16"	3-1/2"	3-1/2"	Included Inclues	2	5	50
4821FBB	FB	Non-Removable Non amovible	Ball Bearing Roulement à bille	3.1 mm	1/16"	3-1/2"	3-1/2"	Included Inclues	2	5	50
4821NBB	NB	Non-Removable Non amovible	Ball Bearing Roulement à bille	3.1 mm	1/16"	3-1/2"	3-1/2"	Included Inclues	2	5	50



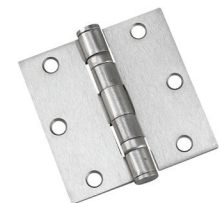
827XB



2827XB



828GAR



4821NBB

Residential - Interior Butt Hinges - 5/8" Radius Charnières intérieures - Résidentielles - Rayon de 5/8 po

- Removable Pin
- Non-Ball Bearing
- Screws Included
- Goupille amovible
- Non roulement à bille
- Vis incluses



1821WB

NO.	FINISH FINI	ASSEMBLY ASSEMBLÉE	GAUGE ÉPAISSEUR	GAP ÉCART	WIDTH LARGEUR	HEIGHT HAUTEUR	MAX. LOAD* CHARGE MAX.*	PK PC	BOX BTE	CASE CAISSE
1821ABB	AB	Assembled Assemblée	2.2 mm	1/16"	3-1/2"	3-1/2"	45 lb (20 kg)	2	5	50
1821ABIP	AB	Assembled Assemblée	2.2 mm	1/16"	3-1/2"	3-1/2"	45 lb (20 kg)	2	1	50
1821ABIPS2	AB	Assembled Assemblée	2.2 mm	1/16"	3-1/2"	3-1/2"	45 lb (20 kg)	1	-	100
1821ACBB	ACB	Assembled Assemblée	2.2 mm	1/16"	3-1/2"	3-1/2"	45 lb (20 kg)	2	5	50
1821ANB	AN	Assembled Assemblée	2.2 mm	1/16"	3-1/2"	3-1/2"	45 lb (20 kg)	2	5	50
1821ANB3S	AN	Assembled Assemblée	2.2 mm	1/16"	3-1/2"	3-1/2"	45 lb (20 kg)	3	5	25
1821ANIP	AN	Assembled Assemblée	2.2 mm	1/16"	3-1/2"	3-1/2"	45 lb (20 kg)	2	1	50
1821BB	B	Assembled Assemblée	2.2 mm	1/16"	3-1/2"	3-1/2"	45 lb (20 kg)	2	5	50
1821BE	B	Assembled Assemblée	2.2 mm	1/16"	3-1/2"	3-1/2"	45 lb (20 kg)	12	1	5
1821BIP	B	Assembled Assemblée	2.2 mm	1/16"	3-1/2"	3-1/2"	45 lb (20 kg)	2	1	50
1821BIPS2	B	Assembled Assemblée	2.2 mm	1/16"	3-1/2"	3-1/2"	45 lb (20 kg)	1	-	100
1821BV	B	Assembled Assemblée	2.2 mm	1/16"	3-1/2"	3-1/2"	45 lb (20 kg)	1	10	100
1821BCB	BC	Assembled Assemblée	2.2 mm	1/16"	3-1/2"	3-1/2"	45 lb (20 kg)	2	5	50
1821BCB3S	BC	Assembled Assemblée	2.2 mm	1/16"	3-1/2"	3-1/2"	45 lb (20 kg)	3	5	25
1821BCIP	BC	Assembled Assemblée	2.2 mm	1/16"	3-1/2"	3-1/2"	45 lb (20 kg)	2	1	50
1821BCV	BC	Assembled Assemblée	2.2 mm	1/16"	3-1/2"	3-1/2"	45 lb (20 kg)	1	10	100
1821BSIP	BS	Assembled Assemblée	2.2 mm	1/16"	3-1/2"	3-1/2"	45 lb (20 kg)	2	1	50
1821BSIPS2	BS	Assembled Assemblée	2.2 mm	1/16"	3-1/2"	3-1/2"	45 lb (20 kg)	1	-	100
1821CB	C	Assembled Assemblée	2.2 mm	1/16"	3-1/2"	3-1/2"	45 lb (20 kg)	2	5	50
1821CIP	C	Assembled Assemblée	2.2 mm	1/16"	3-1/2"	3-1/2"	45 lb (20 kg)	2	1	50
1821FBB	FB	Assembled Assemblée	2.2 mm	1/16"	3-1/2"	3-1/2"	45 lb (20 kg)	2	5	50
1821FBB3S	FB	Assembled Assemblée	2.2 mm	1/16"	3-1/2"	3-1/2"	45 lb (20 kg)	3	5	25
1821FBIP	FB	Assembled Assemblée	2.2 mm	1/16"	3-1/2"	3-1/2"	45 lb (20 kg)	2	1	50
1821FBV	FB	Assembled Assemblée	2.2 mm	1/16"	3-1/2"	3-1/2"	45 lb (20 kg)	1	10	100
1821NBB	NB	Assembled Assemblée	2.2 mm	1/16"	3-1/2"	3-1/2"	45 lb (20 kg)	2	5	50
1821NBB3S	NB	Assembled Assemblée	2.2 mm	1/16"	3-1/2"	3-1/2"	45 lb (20 kg)	3	5	25
1821NBIP	NB	Assembled Assemblée	2.2 mm	1/16"	3-1/2"	3-1/2"	45 lb (20 kg)	2	1	50
1821NBIPS2	NB	Assembled Assemblée	2.2 mm	1/16"	3-1/2"	3-1/2"	45 lb (20 kg)	1	-	100
1821NBKDS	NB	Non-Assembled Non assemblée	2.2 mm	1/16"	3-1/2"	3-1/2"	45 lb (20 kg)	2	1	50
1821NBV	NB	Assembled Assemblée	2.2 mm	1/16"	3-1/2"	3-1/2"	45 lb (20 kg)	1	10	100
1821ORBB	ORB	Assembled Assemblée	2.2 mm	1/16"	3-1/2"	3-1/2"	45 lb (20 kg)	2	5	50
1821ORBIP	ORB	Assembled Assemblée	2.2 mm	1/16"	3-1/2"	3-1/2"	45 lb (20 kg)	2	1	50
1821ORBV	ORB	Assembled Assemblée	2.2 mm	1/16"	3-1/2"	3-1/2"	45 lb (20 kg)	1	10	100
1821WB	W	Assembled Assemblée	2.2 mm	1/16"	3-1/2"	3-1/2"	45 lb (20 kg)	2	5	50
1821XIP	X	Assembled Assemblée	2.2 mm	1/16"	3-1/2"	3-1/2"	45 lb (20 kg)	2	1	50

Residential - Interior Butt Hinges - 5/8" Radius Charnières intérieures - Résidentielles - Rayon de 5/8 po

- Removable Pin
- Non-Ball Bearing
- Screws Included
- Goupille amovible
- Non roulement à bille
- Vis incluses



1820ABB

NO.	FINISH FINI	ASSEMBLY ASSEMBLÉE	GAUGE ÉPAISSEUR	GAP ÉCART	WIDTH LARGEUR	HEIGHT HAUTEUR	MAX. LOAD* CHARGE MAX.*	PK PC	BOX BTE	CASE CAISSE
1820ABB	AB	Assembled Assemblée	2 mm	1/16"	3"	3"	40 lb (18 kg)	2	5	50
1820ABIP	AB	Assembled Assemblée	2 mm	1/16"	3"	3"	40 lb (18 kg)	2	1	50
1820ABIP2	AB	Assembled Assemblée	2 mm	1/16"	3"	3"	40 lb (18 kg)	2	1	50
1820ABKDS	AB	Non-Assembled Non assemblée	2 mm	1/16"	3"	3"	40 lb (18 kg)	2	1	50
1820ABV	AB	Assembled Assemblée	2 mm	1/16"	3"	3"	40 lb (18 kg)	1	10	100
1820ACBB	ACB	Assembled Assemblée	2 mm	1/16"	3"	3"	40 lb (18 kg)	2	5	50
1820ANB	AN	Assembled Assemblée	2 mm	1/16"	3"	3"	40 lb (18 kg)	2	5	50
1820ANIP	AN	Assembled Assemblée	2 mm	1/16"	3"	3"	40 lb (18 kg)	2	1	50
1820ANIP2	AN	Assembled Assemblée	2 mm	1/16"	3"	3"	40 lb (18 kg)	2	1	50
1820ANKDS	AN	Non-Assembled Non assemblée	2 mm	1/16"	3"	3"	40 lb (18 kg)	2	1	50
1820ANV	AN	Assembled Assemblée	2 mm	1/16"	3"	3"	40 lb (18 kg)	1	10	100
1820BB	B	Assembled Assemblée	2 mm	1/16"	3"	3"	40 lb (18 kg)	2	5	50
1820BE	B	Assembled Assemblée	2 mm	1/16"	3"	3"	40 lb (18 kg)	12	1	5
1820BIP	B	Assembled Assemblée	2 mm	1/16"	3"	3"	40 lb (18 kg)	2	1	50
1820BIP2	B	Assembled Assemblée	2 mm	1/16"	3"	3"	40 lb (18 kg)	2	1	50
1820BKDS	B	Non-Assembled Non assemblée	2 mm	1/16"	3"	3"	40 lb (18 kg)	2	1	50
1820BV	B	Assembled Assemblée	2 mm	1/16"	3"	3"	40 lb (18 kg)	1	10	100
1820BCB	BC	Assembled Assemblée	2 mm	1/16"	3"	3"	40 lb (18 kg)	2	5	50
1820BCIP	BC	Assembled Assemblée	2 mm	1/16"	3"	3"	40 lb (18 kg)	2	1	50
1820BCKDS	BC	Non-Assembled Non assemblée	2 mm	1/16"	3"	3"	40 lb (18 kg)	2	1	50
1820BCV	BC	Assembled Assemblée	2 mm	1/16"	3"	3"	40 lb (18 kg)	1	10	100
1820CB	C	Assembled Assemblée	2 mm	1/16"	3"	3"	40 lb (18 kg)	2	5	50
1820CIP	C	Assembled Assemblée	2 mm	1/16"	3"	3"	40 lb (18 kg)	2	1	50
1820FBB	FB	Assembled Assemblée	2 mm	1/16"	3"	3"	40 lb (18 kg)	2	5	50
1820FBIP	FB	Assembled Assemblée	2 mm	1/16"	3"	3"	40 lb (18 kg)	2	1	50
1820FBKDS	FB	Non-Assembled Non assemblée	2 mm	1/16"	3"	3"	40 lb (18 kg)	2	1	50
1820FBV	FB	Assembled Assemblée	2 mm	1/16"	3"	3"	40 lb (18 kg)	1	10	100
1820NBB	NB	Assembled Assemblée	2 mm	1/16"	3"	3"	40 lb (18 kg)	2	5	50
1820NBBS	NB	Assembled Assemblée	2 mm	1/16"	3"	3"	40 lb (18 kg)	3	1	50
1820NBIP	NB	Assembled Assemblée	2 mm	1/16"	3"	3"	40 lb (18 kg)	2	1	50

Residential - Interior Butt Hinges Charnières intérieures - Résidentielles

Residential - Interior Butt Hinges - 5/8" Radius Charnières intérieures - Résidentielles - Rayon de 5/8 po

- Removable Pin • Goupille amovible
- Screws Included • Vis incluses



41820NBB

NO.	FINISH FINI	STYLE	ASSEMBLY ASSEMBLÉE	GAUGE ÉPAISSEUR	GAP ÉCART	WIDTH LARGEUR	HEIGHT HAUTEUR	MAX. LOAD* CHARGE MAX.*	PK PC	BOX BTE	CASE CAISSE
1820NBIP2	NB	Non-ball Bearing Non roulement à bille	Assembled Assemblée	2 mm	1/16"	3"	3"	40 lb (18 kg)	2	1	50
1820NBIP2C	NB	Non-ball Bearing Non roulement à bille	Assembled Assemblée	2 mm	1/16"	3"	3"	40 lb (18 kg)	2	1	50
1820NBIPSC	NB	Non-ball Bearing Non roulement à bille	Assembled Assemblée	2 mm	1/16"	3"	3"	40 lb (18 kg)	2	1	50
1820NBKDS	NB	Non-ball Bearing Non roulement à bille	Non-Assembled Non assemblée	2 mm	1/16"	3"	3"	40 lb (18 kg)	2	1	50
1820NBV	NB	Non-ball Bearing Non roulement à bille	Assembled Assemblée	2 mm	1/16"	3"	3"	40 lb (18 kg)	1	10	100
1820ORB	ORB	Non-ball Bearing Non roulement à bille	Assembled Assemblée	2 mm	1/16"	3"	3"	40 lb (18 kg)	2	5	50
1820ORBIP	ORB	Non-ball Bearing Non roulement à bille	Assembled Assemblée	2 mm	1/16"	3"	3"	40 lb (18 kg)	2	1	50
1820ORBIP2	ORB	Non-ball Bearing Non roulement à bille	Assembled Assemblée	2 mm	1/16"	3"	3"	40 lb (18 kg)	2	1	50
1820ORBIPC	ORB	Non-ball Bearing Non roulement à bille	Assembled Assemblée	2 mm	1/16"	3"	3"	40 lb (18 kg)	2	1	50
1820ORBKDS	ORB	Non-ball Bearing Non roulement à bille	Non-Assembled Non assemblée	2 mm	1/16"	3"	3"	40 lb (18 kg)	2	1	50
1820ORB	ORB	Non-ball Bearing Non roulement à bille	Assembled Assemblée	2 mm	1/16"	3"	3"	40 lb (18 kg)	1	10	100
1820SSB	SS	Non-ball Bearing Non roulement à bille	Assembled Assemblée	2 mm	1/16"	3"	3"	40 lb (18 kg)	2	5	50
1820WB	W	Non-ball Bearing Non roulement à bille	Assembled Assemblée	2 mm	1/16"	3"	3"	40 lb (18 kg)	2	5	50
1820WKD	W	Non-ball Bearing Non roulement à bille	Non-Assembled Non assemblée	2 mm	1/16"	3"	3"	40 lb (18 kg)	2	1	50
1820WV	W	Non-ball Bearing Non roulement à bille	Assembled Assemblée	2 mm	1/16"	3"	3"	40 lb (18 kg)	1	10	100
1820XIP	X	Non-ball Bearing Non roulement à bille	Assembled Assemblée	2 mm	1/16"	3"	3"	40 lb (18 kg)	2	1	50
1820XIP2	X	Non-ball Bearing Non roulement à bille	Assembled Assemblée	2 mm	1/16"	3"	3"	40 lb (18 kg)	2	1	50
1820XIP2C	X	Non-ball Bearing Non roulement à bille	Assembled Assemblée	2 mm	1/16"	3"	3"	40 lb (18 kg)	2	1	50
1820XKDS	X	Non-ball Bearing Non roulement à bille	Non-Assembled Non assemblée	2 mm	1/16"	3"	3"	40 lb (18 kg)	2	1	50
41820ANB	AN	Ball Bearing Roulement à bille	Assembled Assemblée	2.2 mm	1/16"	3"	3"	-	2	5	50
41820FBB	FB	Ball Bearing Roulement à bille	Assembled Assemblée	2.2 mm	1/16"	3"	3"	-	2	5	50
41820NBB	NB	Ball Bearing Roulement à bille	Assembled Assemblée	2.2 mm	1/16"	3"	3"	-	2	5	50
41820ORB	ORB	Ball Bearing Roulement à bille	Assembled Assemblée	2.2 mm	1/16"	3"	3"	-	2	5	50

Residential - Interior Butt Hinges - 1/4" Radius Charnières intérieures - Résidentielles - Rayon de 1/4 po

- Removable Pin
- Goupille amovible

NO.	FINISH FINI	STYLE	ASSEMBLY ASSEMBLÉE	GAUGE ÉPAISSEUR	GAP ÉCART	WIDTH LARGEUR	HEIGHT HAUTEUR	MAX. LOAD* CHARGE MAX.*	PK PC	BOX BTE	CASE CAISSE
42821BCB	BC	Ball Bearing Roulement à bille	Assembled Assemblée	3.1 mm	1/16"	3-1/2"	3-1/2"	-	2	5	50
42821CB	C	Ball Bearing Roulement à bille	Assembled Assemblée	3.1 mm	1/16"	3-1/2"	3-1/2"	-	2	5	50
42821FBB	FB	Ball Bearing Roulement à bille	Assembled Assemblée	3.1 mm	1/16"	3-1/2"	3-1/2"	-	2	5	50
42821NBB	NB	Ball Bearing Roulement à bille	Assembled Assemblée	3.1 mm	1/16"	3-1/2"	3-1/2"	-	2	5	50
42821ORBB	ORB	Ball Bearing Roulement à bille	Assembled Assemblée	3.1 mm	1/16"	3-1/2"	3-1/2"	-	2	5	50
42821SANB	SAN	Ball Bearing Roulement à bille	Assembled Assemblée	3.1 mm	1/16"	3-1/2"	3-1/2"	-	2	5	50
428212BCB	BC	Ball Bearing Roulement à bille	Assembled Assemblée	2 mm	1/16"	3-1/2"	3-1/2"	-	2	5	50
428212CB	C	Ball Bearing Roulement à bille	Assembled Assemblée	2 mm	1/16"	3-1/2"	3-1/2"	-	2	5	50
428212FBB	FB	Ball Bearing Roulement à bille	Assembled Assemblée	2 mm	1/16"	3-1/2"	3-1/2"	-	2	5	50
428212NBB	NB	Ball Bearing Roulement à bille	Assembled Assemblée	2 mm	1/16"	3-1/2"	3-1/2"	-	2	5	50
428212ORBB	ORB	Ball Bearing Roulement à bille	Assembled Assemblée	2 mm	1/16"	3-1/2"	3-1/2"	-	2	5	50
2821ABB	AB	Non-ball Bearing Non roulement à bille	Assembled Assemblée	2.2 mm	1/16"	3-1/2"	3-1/2"	45 lb (20 kg)	2	5	50
2821ACBB	ACB	Non-ball Bearing Non roulement à bille	Assembled Assemblée	2.2 mm	1/16"	3-1/2"	3-1/2"	45 lb (20 kg)	2	5	50
2821ANB	AN	Non-ball Bearing Non roulement à bille	Assembled Assemblée	2.2 mm	1/16"	3-1/2"	3-1/2"	45 lb (20 kg)	2	5	50
2821ANV	AN	Non-ball Bearing Non roulement à bille	Assembled Assemblée	2.2 mm	1/16"	3-1/2"	3-1/2"	45 lb (20 kg)	1	10	100
2821BB	B	Non-ball Bearing Non roulement à bille	Assembled Assemblée	2.2 mm	1/16"	3-1/2"	3-1/2"	45 lb (20 kg)	2	5	50
2821BE	B	Non-ball Bearing Non roulement à bille	Assembled Assemblée	2.2 mm	1/16"	3-1/2"	3-1/2"	45 lb (20 kg)	12	1	5
2821BCB	BC	Non-ball Bearing Non roulement à bille	Assembled Assemblée	2.2 mm	1/16"	3-1/2"	3-1/2"	45 lb (20 kg)	2	5	50
2821BCKDS	BC	Non-ball Bearing Non roulement à bille	Non-Assembled Non assemblée	2.2 mm	1/16"	3-1/2"	3-1/2"	45 lb (20 kg)	2	1	50
2821BCV	BC	Non-ball Bearing Non roulement à bille	Assembled Assemblée	2.2 mm	1/16"	3-1/2"	3-1/2"	45 lb (20 kg)	1	10	100
2821CB	C	Non-ball Bearing Non roulement à bille	Assembled Assemblée	2.2 mm	1/16"	3-1/2"	3-1/2"	45 lb (20 kg)	2	5	50
2821CIP	C	Non-ball Bearing Non roulement à bille	Assembled Assemblée	2.2 mm	1/16"	3-1/2"	3-1/2"	45 lb (20 kg)	2	1	50
2821CV	C	Non-ball Bearing Non roulement à bille	Assembled Assemblée	2.2 mm	1/16"	3-1/2"	3-1/2"	45 lb (20 kg)	1	10	100
2821FBB	FB	Non-ball Bearing Non roulement à bille	Assembled Assemblée	2.2 mm	1/16"	3-1/2"	3-1/2"	45 lb (20 kg)	2	5	50
2821FBKDS	FB	Non-ball Bearing Non roulement à bille	Non-Assembled Non assemblée	2.2 mm	1/16"	3-1/2"	3-1/2"	45 lb (20 kg)	2	1	50
2821FBV	FB	Non-ball Bearing Non roulement à bille	Assembled Assemblée	2.2 mm	1/16"	3-1/2"	3-1/2"	45 lb (20 kg)	1	10	100
2821NBB	NB	Non-ball Bearing Non roulement à bille	Assembled Assemblée	2.2 mm	1/16"	3-1/2"	3-1/2"	45 lb (20 kg)	2	5	50
2821NBV	NB	Non-ball Bearing Non roulement à bille	Assembled Assemblée	2.2 mm	1/16"	3-1/2"	3-1/2"	45 lb (20 kg)	1	10	100
2821ORBB	ORB	Non-ball Bearing Non roulement à bille	Assembled Assemblée	2.2 mm	1/16"	3-1/2"	3-1/2"	45 lb (20 kg)	2	5	50
2821ORBV	ORB	Non-ball Bearing Non roulement à bille	Assembled Assemblée	2.2 mm	1/16"	3-1/2"	3-1/2"	45 lb (20 kg)	1	10	100
2821SSB	SS	Non-ball Bearing Non roulement à bille	Assembled Assemblée	2.2 mm	1/16"	3-1/2"	3-1/2"	45 lb (20 kg)	2	5	50
2821WB	W	Non-ball Bearing Non roulement à bille	Assembled Assemblée	2.2 mm	1/16"	3-1/2"	3-1/2"	45 lb (20 kg)	2	5	50



42821FBB



2821ACBB

Residential - Interior Butt Hinges Charnières intérieures - Résidentielles

Residential - Interior Butt Hinges - 1/4" Radius Charnières intérieures - Résidentielles - Rayon de 1/4 po

- Removable Pin
- Non-Ball Bearing
- Goupille amovible
- Non roulement à bille



2820CB

NO.	FINISH FINI	ASSEMBLY ASSEMBLÉE	GAUGE ÉPAISSEUR	GAP ÉCART	WIDTH LARGEUR	HEIGHT HAUTEUR	MAX. LOAD* CHARGE MAX.*	PK PC	BOX BTE	CASE CAISSE
2820ABB	AB	Assembled Assemblée	2 mm	1/16"	3"	3"	40 lb (18 kg)	2	5	50
2820ACBB	ACB	Assembled Assemblée	2 mm	1/16"	3"	3"	40 lb (18 kg)	2	5	50
2820ANB	AN	Assembled Assemblée	2 mm	1/16"	3"	3"	40 lb (18 kg)	2	5	50
2820ANV	AN	Assembled Assemblée	2 mm	1/16"	3"	3"	40 lb (18 kg)	1	10	100
2820BB	B	Assembled Assemblée	2 mm	1/16"	3"	3"	40 lb (18 kg)	2	5	50
2820BE	B	Assembled Assemblée	2 mm	1/16"	3"	3"	40 lb (18 kg)	12	1	5
2820BV	B	Assembled Assemblée	2 mm	1/16"	3"	3"	40 lb (18 kg)	1	10	100
2820BCB	BC	Assembled Assemblée	2 mm	1/16"	3"	3"	40 lb (18 kg)	2	5	50
2820BCKDS	BC	Non-Assembled Non assemblée	2 mm	1/16"	3"	3"	40 lb (18 kg)	2	1	50
2820BCV	BC	Assembled Assemblée	2 mm	1/16"	3"	3"	40 lb (18 kg)	1	10	100
2820CB	C	Assembled Assemblée	2 mm	1/16"	3"	3"	40 lb (18 kg)	2	5	50
2820CV	C	Assembled Assemblée	2 mm	1/16"	3"	3"	40 lb (18 kg)	1	10	100
2820FBB	FB	Assembled Assemblée	2 mm	1/16"	3"	3"	40 lb (18 kg)	2	5	50
2820FBV	FB	Assembled Assemblée	2 mm	1/16"	3"	3"	40 lb (18 kg)	1	10	100
2820NBB	NB	Assembled Assemblée	2 mm	1/16"	3"	3"	40 lb (18 kg)	2	5	50
2820NBV	NB	Assembled Assemblée	2 mm	1/16"	3"	3"	40 lb (18 kg)	1	10	100
2820ORB	ORB	Assembled Assemblée	2 mm	1/16"	3"	3"	40 lb (18 kg)	2	5	50
2820ORB	ORB	Assembled Assemblée	2 mm	1/16"	3"	3"	40 lb (18 kg)	1	10	100
2820WB	W	Assembled Assemblée	2 mm	1/16"	3"	3"	40 lb (18 kg)	2	5	50
2820WV	W	Assembled Assemblée	2 mm	1/16"	3"	3"	40 lb (18 kg)	1	10	100

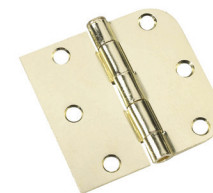
Residential - Interior Butt Hinges - Combination Charnières intérieures - Résidentielles - Combinées

- Removable Pin
- Non-Ball Bearing
- Screws Included
- Goupille amovible
- Non roulement à bille
- Vis incluses

NO.	FINISH FINI	ASSEMBLY ASSEMBLÉE	GAUGE ÉPAISSEUR	GAP ÉCART	WIDTH LARGEUR	HEIGHT HAUTEUR	PK PC	BOX BTE	CASE CAISSE
81821ABB	AB	Assembled Assemblée	2.2 mm	1/16"	3-11/16"	3-1/2"	2	5	50
81821ACBB	ACB	Assembled Assemblée	2.2 mm	1/16"	3-11/16"	3-1/2"	2	5	50
81821ANB	AN	Assembled Assemblée	2.2 mm	1/16"	3-11/16"	3-1/2"	2	5	50
81821ANB3	AN	Assembled Assemblée	2.2 mm	1/16"	3-11/16"	3-1/2"	3	5	25
81821BB	B	Assembled Assemblée	2.2 mm	1/16"	3-11/16"	3-1/2"	2	5	50
81821BCB	BC	Assembled Assemblée	2.2 mm	1/16"	3-11/16"	3-1/2"	2	5	50
81821BCB3	BC	Assembled Assemblée	2.2 mm	1/16"	3-11/16"	3-1/2"	3	5	25
81821FBB	FB	Assembled Assemblée	2.2 mm	1/16"	3-11/16"	3-1/2"	2	5	50
81821FBB3	FB	Assembled Assemblée	2.2 mm	1/16"	3-11/16"	3-1/2"	3	5	25
81821NBB	NB	Assembled Assemblée	2.2 mm	1/16"	3-11/16"	3-1/2"	2	5	50
81821NBB3	NB	Assembled Assemblée	2.2 mm	1/16"	3-11/16"	3-1/2"	3	5	25
81821ORBB	ORB	Assembled Assemblée	2.2 mm	1/16"	3-11/16"	3-1/2"	2	5	50
81820ABB	AB	Assembled Assemblée	2.2 mm	1/16"	3-3/16"	3"	2	5	50
81820ACBB	ACB	Assembled Assemblée	2.2 mm	1/16"	3-3/16"	3"	2	5	50
81820ANB	AN	Assembled Assemblée	2.2 mm	1/16"	3-3/16"	3"	2	5	50
81820BB	B	Assembled Assemblée	2.2 mm	1/16"	3-3/16"	3"	2	5	50
81820BBS	B	Assembled Assemblée	2.2 mm	1/16"	3-3/16"	3"	3	1	50
81820BBS2	B	Assembled Assemblée	2.2 mm	1/16"	3-3/16"	3"	3	1	50
81820BKDS	B	Non-Assembled Non assemblée	2.2 mm	1/16"	3-3/16"	3"	2	1	50
81820BCB	BC	Assembled Assemblée	2.2 mm	1/16"	3-3/16"	3"	2	5	50
81820FBB	FB	Assembled Assemblée	2.2 mm	1/16"	3-3/16"	3"	2	5	50
81820NBB	NB	Assembled Assemblée	2.2 mm	1/16"	3-3/16"	3"	2	5	50
81820NBBS	NB	Assembled Assemblée	2.2 mm	1/16"	3-3/16"	3"	3	1	50
81820NBBS2	NB	Assembled Assemblée	2.2 mm	1/16"	3-3/16"	3"	3	1	50
81820NBKDS	NB	Non-Assembled Non assemblée	2.2 mm	1/16"	3-3/16"	3"	2	1	50
81820ORBB	ORB	Assembled Assemblée	2.2 mm	1/16"	3-3/16"	3"	2	5	50
81820XKDS	X	Non-Assembled Non assemblée	2.2 mm	1/16"	3-3/16"	3"	2	1	50



81821ACBB



81820BB

Residential - Interior Butt Hinges - Half Hinges Charnières intérieures - Résidentielles - Demi-charnières

- Removable Pin
- Goupille amovible
- Screws Included
- Vis incluses

NO.	FINISH FINI	PIN GOUPILLE	KNUCKLE CHARNON	CORNER TYPE TYPE DE COINS	GAUGE ÉPAISSEUR	WIDTH LARGEUR	HEIGHT HAUTEUR	PK PC	CASE CAISSE
81820ABKDS1A	AB	Not Included Non include	3	5/8" Radius Rayon de 5/8 po	2.0 mm	1-1/2"	3"	1	100
81820ABKDS1B	AB	Included Include	2	Square Carré	2.0 mm	1-1/2"	3"	1	100
81820ANKDS1A	AN	Not Included Non include	3	5/8" Radius Rayon de 5/8 po	2.0 mm	1-1/2"	3"	1	100
81820ANKDS1B	AN	Included Include	2	Square Carré	2.0 mm	1-1/2"	3"	1	100
81820ANKDS1C	AN	Included Include	2	5/8" Radius Rayon de 5/8 po	2.0 mm	1-1/2"	3"	1	100
81820FBKDS1A	FB	Not Included Non include	3	5/8" Radius Rayon de 5/8 po	2.0 mm	1-1/2"	3"	1	100
81820FBKDS1B	FB	Included Include	2	Square Carré	2.0 mm	1-1/2"	3"	1	100
81820FBKDS1C	FB	Included Include	2	5/8" Radius Rayon de 5/8 po	2.0 mm	1-1/2"	3"	1	100
81820FBKDS1D	FB	Not Included Non include	3	5/8" Radius Rayon de 5/8 po	2.0 mm	1-1/2"	3"	1	100
81820NBKDS1A	NB	Not Included Non include	3	5/8" Radius Rayon de 5/8 po	2.0 mm	1-1/2"	3"	1	100
81820NBKDS1B	NB	Included Include	2	Square Carré	2.0 mm	1-1/2"	3"	1	100
81820NBKDS1C	NB	Included Include	2	5/8" Radius Rayon de 5/8 po	2.0 mm	1-1/2"	3"	1	100
81820NBKDS1D	NB	Not Included Non include	3	5/8" Radius Rayon de 5/8 po	2.0 mm	1-1/2"	3"	1	100
81820ORBKDS1A	ORB	Not Included Non include	3	5/8" Radius Rayon de 5/8 po	2.0 mm	1-1/2"	3"	1	100
81820ORBKDS1B	ORB	Included Include	2	Square Carré	2.0 mm	1-1/2"	3"	1	100



81820ORBKDS1A



81820ABKDS1B



81820NBKDS1C

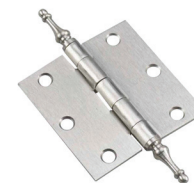
Decorative Butt Hinge Penture décorative

- Removable Pin
- Goupille amovible
- Non-Ball Bearing
- Non roulement à bille
- Assembled
- Assemblée

NO.	FINISH FINI	STYLE	CORNER TYPE TYPE DE COINS	GAUGE ÉPAISSEUR	WIDTH LARGEUR	HEIGHT HAUTEUR	PK PC	BOX BTE	CASE CAISSE
71820ABB	AB	Steeple Tips Embouts conique	5/8" Radius Rayon de 5/8 po	2 mm	3"	3"	2	5	50
71820ANB	AN	Steeple Tips Embouts conique	5/8" Radius Rayon de 5/8 po	2 mm	3"	3"	2	5	50
71820BBB	BB	Steeple Tips Embouts conique	5/8" Radius Rayon de 5/8 po	2 mm	3"	3"	2	5	50
71820NBB	NB	Steeple Tips Embouts conique	5/8" Radius Rayon de 5/8 po	2 mm	3"	3"	2	5	50
71820ORB	ORB	Steeple Tips Embouts conique	5/8" Radius Rayon de 5/8 po	2 mm	3"	3"	2	5	50
7821ABIP	AB	Steeple Tips Embouts conique	Square Carré	-	3-1/2"	3-1/2"	2	-	50
7821ANIP	AN	Steeple Tips Embouts conique	Square Carré	-	3-1/2"	3-1/2"	2	-	50
7821BCIP	BC	Steeple Tips Embouts conique	Square Carré	-	3-1/2"	3-1/2"	2	-	50
7821NBIP	NB	Steeple Tips Embouts conique	Square Carré	-	3-1/2"	3-1/2"	2	-	50
7821ORBIP	ORB	Steeple Tips Embouts conique	Square Carré	-	3-1/2"	3-1/2"	2	-	50
7820ANB	AN	Steeple Tips Embouts conique	Square Carré	2 mm	3"	3"	2	5	50
7820BBB	BB	Steeple Tips Embouts conique	Square Carré	2 mm	3"	3"	2	5	50
7820NBB	NB	Steeple Tips Embouts conique	Square Carré	2 mm	3"	3"	2	5	50
6820NBB	NB	Ball Tips Embouts sphériques	Square Carré	2 mm	3"	3"	2	5	50



71820ANB



7820NBB



6820NBB

Butt Hinges - Square Charnières à mortaisée - Carrées

- Non-Ball Bearing
- Assembled
- Non roulement à bille
- Assemblée

NO.	FINISH FINI	PIN GOUPILLE	GAUGE ÉPAISSEUR	GAP ÉCART	WIDTH LARGEUR	HEIGHT HAUTEUR	PK PC	BOX BTE	CASE CAISSE
844BV	B	Removable Amovible	2 mm	1/16"	2"	3"	2	20	100
844XV	X	Removable Amovible	2 mm	1/16"	2"	3"	2	20	100
839BV	B	Non-Removable Non amovible	2 mm	1/16"	2"	3"	2	20	100
839XB	X	Non-Removable Non amovible	2 mm	1/16"	2"	3"	1	20	300
839XV	X	Non-Removable Non amovible	2 mm	1/16"	2"	3"	2	20	100
826SSV	SS	Removable Amovible	1.5 mm	-	2-1/2"	2-1/2"	2	10	100
826XB	X	Removable Amovible	1.3 mm	-	2-1/2"	2-1/2"	1	20	200
826XBC	X	Removable Amovible	1.3 mm	-	2-1/2"	2-1/2"	1	40	400
826XV	X	Removable Amovible	1.3 mm	-	2-1/2"	2-1/2"	2	20	200
843BV	B	Removable Amovible	1.4 mm	-	1-5/8"	2-1/2"	2	20	100
843XV	X	Removable Amovible	1.4 mm	-	1-5/8"	2-1/2"	2	20	100
838BB	B	Non-Removable Non amovible	1.4 mm	-	1-5/8"	2-1/2"	1	20	500
838BV	B	Non-Removable Non amovible	1.4 mm	-	1-5/8"	2-1/2"	2	20	100
838XB	X	Non-Removable Non amovible	1.4 mm	-	1-5/8"	2-1/2"	1	20	500
838XV	X	Non-Removable Non amovible	1.4 mm	-	1-5/8"	2-1/2"	2	20	100
838C2DIP	YZ	Non-Removable Non amovible	1.45 mm	-	1-5/8"	2-1/2"	1	-	250
838C2GIP	X	Non-Removable Non amovible	1.45 mm	-	1-5/8"	2-1/2"	1	-	250
825XB	X	Removable Amovible	1.25 mm	-	2"	2"	1	20	200
825XBC	X	Removable Amovible	1.25 mm	-	2"	2"	1	40	400
825XV	X	Removable Amovible	1.25 mm	-	2"	2"	2	20	200
825SSV	SS	Removable Amovible	1.7 mm	-	2"	2"	2	10	100
842BV	B	Removable Amovible	1.25 mm	-	1-1/2"	2"	2	20	100
842XB	X	Removable Amovible	1.25 mm	-	1-1/2"	2"	1	20	500
842XV	X	Removable Amovible	1.25 mm	-	1-1/2"	2"	2	20	100
837BB	B	Non-Removable Non amovible	1.25 mm	-	1-1/2"	2"	1	20	500
837BV	B	Non-Removable Non amovible	1.25 mm	-	1-1/2"	2"	2	20	100
837XB	X	Non-Removable Non amovible	1.25 mm	-	1-1/2"	2"	1	20	500
837XV	X	Non-Removable Non amovible	1.25 mm	-	1-1/2"	2"	2	20	100
824SSV*	SS	Removable Amovible	1/16"	-	1-7/16"	1-1/2"	2	10	100
841BB	B	Removable Amovible	1/16"	-	1-7/16"	1-1/2"	1	20	500
841BV	B	Removable Amovible	1/16"	-	1-7/16"	1-1/2"	2	20	100
841XV	X	Removable Amovible	1/16"	-	1-7/16"	1-1/2"	2	20	100
836BB	B	Non-Removable Non amovible	1/16"	-	1-7/16"	1-1/2"	1	20	500
836BV	B	Non-Removable Non amovible	1/16"	-	1-7/16"	1-1/2"	2	20	100
836XB	X	Non-Removable Non amovible	1/16"	-	1-7/16"	1-1/2"	1	20	500
836XV	X	Non-Removable Non amovible	1/16"	-	1-7/16"	1-1/2"	2	20	100
840BV	B	Removable Amovible	1/16"	-	1"	1"	2	20	100
840XB	X	Removable Amovible	1/16"	-	1"	1"	1	20	500
840XV	X	Removable Amovible	1/16"	-	1"	1"	2	20	100
835BV	B	Non-Removable Non amovible	1/16"	-	1"	1"	2	20	100
835XB	X	Non-Removable Non amovible	1/16"	-	1"	1"	1	20	500
835XV	X	Non-Removable Non amovible	1/16"	-	1"	1"	2	20	100



844XV



841BV



825XV



839BV



837XV

Spring Door Hinges Charnières à ressort pour portes

- Non-Removable Pin
- Spring
- Assembled
- Screws Included
- Goupille non amovible
- À ressort
- Assemblée
- Vis incluses

NO.	FINISH FINI	CORNER TYPE TYPE DE COINS	STANDARDS NORMES	GAUGE ÉPAISSEUR	GAP ÉCART	WIDTH LARGEUR	HEIGHT HAUTEUR	PK PC	BOX BTE	CASE CAISSE
52823BB1	B	1/4" Radius Rayon de 1/4 po	-	3.3 mm	-	4"	4-1/2"	1	-	50
52823BCB1	BC	1/4" Radius Rayon de 1/4 po	-	3.3 mm	-	4"	4-1/2"	1	-	50
52823FBB1	FB	1/4" Radius Rayon de 1/4 po	-	3.3 mm	-	4"	4-1/2"	1	-	50
52823NBB1	NB	1/4" Radius Rayon de 1/4 po	-	3.3 mm	-	4"	4-1/2"	1	-	50
52823SSB1	SS	1/4" Radius Rayon de 1/4 po	-	3.3 mm	-	4"	4-1/2"	1	-	50
52822BR	B	1/4" Radius Rayon de 1/4 po	UL, Grade 1	2.7 mm	-	4"	4"	1	5	25
52822BCB1	BC	1/4" Radius Rayon de 1/4 po	UL, Grade 1	2.7 mm	-	4"	4"	1	-	50
52822FBB1	FB	1/4" Radius Rayon de 1/4 po	UL, Grade 1	2.7 mm	-	4"	4"	1	-	50
52822NBB1	NB	1/4" Radius Rayon de 1/4 po	UL, Grade 1	2.7 mm	-	4"	4"	1	-	50
52822SSB1	SS	1/4" Radius Rayon de 1/4 po	UL, Grade 1	2.7 mm	-	4"	4"	1	-	50
52821BR	B	1/4" Radius Rayon de 1/4 po	UL, Grade 1	2.5 mm	-	3-1/2"	3-1/2"	1	5	25
52821BCB1	BC	1/4" Radius Rayon de 1/4 po	UL, Grade 1	2.5 mm	-	3-1/2"	3-1/2"	1	-	50
52821FBB1	FB	1/4" Radius Rayon de 1/4 po	UL, Grade 1	2.5 mm	-	3-1/2"	3-1/2"	1	-	50
52821NBB1	NB	1/4" Radius Rayon de 1/4 po	UL, Grade 1	2.5 mm	-	3-1/2"	3-1/2"	1	-	50
52821SSB1	SS	1/4" Radius Rayon de 1/4 po	UL, Grade 1	2.5 mm	-	3-1/2"	3-1/2"	1	-	50
51822BR	B	5/8" Radius Rayon de 5/8 po	UL, Grade 1	2.7 mm	-	4"	4"	1	5	25
51822BCB1	BC	5/8" Radius Rayon de 5/8 po	UL, Grade 1	2.7 mm	-	4"	4"	1	-	50
51822NBB1	NB	5/8" Radius Rayon de 5/8 po	UL, Grade 1	2.7 mm	-	4"	4"	1	-	50
51822SSB1	SS	5/8" Radius Rayon de 5/8 po	UL, Grade 1	2.7 mm	-	4"	4"	1	-	50
51821BR	B	5/8" Radius Rayon de 5/8 po	UL, Grade 1	2.5 mm	-	3-1/2"	3-1/2"	1	5	25
51821BCR	BC	5/8" Radius Rayon de 5/8 po	UL, Grade 1	2.5 mm	-	3-1/2"	3-1/2"	1	5	25
51821NBR	NB	5/8" Radius Rayon de 5/8 po	UL, Grade 1	2.5 mm	-	3-1/2"	3-1/2"	1	5	25
51821SSB1	SS	5/8" Radius Rayon de 5/8 po	UL, Grade 1	2.5 mm	-	3-1/2"	3-1/2"	1	-	50
CRAB	AB	Combination Combinée	-	1/8"	1/16"	4"	4"	1	-	50
CRBB	BB	Combination Combinée	-	1/8"	1/16"	4"	4"	1	-	50
CRBL	BL	Combination Combinée	-	1/8"	1/16"	4"	4"	1	-	50
CRORB	ORB	Combination Combinée	-	1/8"	1/16"	4"	4"	1	-	50
CRPW	PEW	Combination Combinée	-	1/8"	1/16"	4"	4"	1	-	50
CRSC	SC	Combination Combinée	-	1/8"	1/16"	4"	4"	1	-	50
CRSN	SN	Combination Combinée	-	1/8"	1/16"	4"	4"	1	-	50
CRWH	W	Combination Combinée	-	1/8"	1/16"	4"	4"	1	-	50
CRZC	X	Combination Combinée	-	1/8"	1/16"	4"	4"	1	-	50



52821FBB1



51822NBB1



CRSC

Spring Door Hinges - Square
Charnières à ressort pour portes - Carrées

- Non-Removable Pin
- Spring
- Assembled
- Screws Included
- Goupille non amovible
- À ressort
- Assemblée
- Vis incluses

NO.	FINISH FINI	STANDARDS NORMES	GAUGE ÉPAISSEUR	WIDTH LARGEUR	HEIGHT HAUTEUR	PK PC	BOX BTE	CASE CAISSE
5823ABB1	AB	-	3.3 mm	4"	4-1/2"	1	-	50
5823ANB1	AN	-	3.3 mm	4"	4-1/2"	1	-	50
5823BB1	B	-	3.3 mm	4"	4-1/2"	1	-	50
5823BCB1	BC	-	3.3 mm	4"	4-1/2"	1	-	50
5823CB1	C	-	3.3 mm	4"	4-1/2"	1	-	50
5823FBB1	FB	-	3.3 mm	4"	4-1/2"	1	-	50
5823NBB1	NB	-	3.3 mm	4"	4-1/2"	1	-	50
5823ORBB1	ORB	-	3.3 mm	4"	4-1/2"	1	-	50
5823SSB1	SS	-	3.3 mm	4"	4-1/2"	1	-	50
5822ANIP	AN	UL, Grade 1	2.7 mm	4"	4"	1	-	40
5822BCIP	BC	UL, Grade 1	2.7 mm	4"	4"	1	-	40
5822ORBIP	ORB	UL, Grade 1	2.7 mm	4"	4"	1	-	40
5821BR	B	UL, Grade 1	2.5 mm	3-1/2"	3-1/2"	1	5	25
5821BCB1	BC	UL, Grade 1	2.5 mm	3-1/2"	3-1/2"	1	-	50
5821NBB1	NB	UL, Grade 1	2.5 mm	3-1/2"	3-1/2"	1	-	50
5821SSB1	SS	UL, Grade 1	2.5 mm	3-1/2"	3-1/2"	1	-	50



5823ANB1



5822BCIP

Swing Clear Hinges
Charnières contre-coudées

- Square Corners
- Assembled
- Screws Included
- Coins carrés
- Assemblée
- Vis incluses

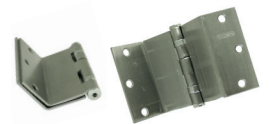
NO.	FINISH FINI	POSITION	PIN GOUPILLE	STYLE	STANDARDS NORMES	GAUGE ÉPAISSEUR	GAP ÉCART	WIDTH LARGEUR	HEIGHT HAUTEUR	PK PC	BOX BTE	CASE CAISSE
65823BCSCB	BC	-	-	Spring À ressort	ANSI A156.7	3.4 mm	3.4 mm	4"	4-1/2"	1	1	25
64823BCSCB1L	BC	Left Hand Main gauche	Removable Amovible	Ball Bearing Roulement à bille	ANSI A156.7	3.4 mm	3.4 mm	4"	4-1/2"	1	1	25
64823BCSCB1R	BC	Right Hand Main droite	Removable Amovible	Ball Bearing Roulement à bille	ANSI A156.7	3.4 mm	3.4 mm	4"	4-1/2"	1	1	25
64823NBSCBL	NB	Left Hand Main gauche	Removable Amovible	Ball Bearing Roulement à bille	ANSI A156.7	3.4 mm	3.4 mm	4"	4-1/2"	3	1	16
64823NBSCBR	NB	Right Hand Main droite	Removable Amovible	Ball Bearing Roulement à bille	ANSI A156.7	3.4 mm	3.4 mm	4"	4-1/2"	3	1	16
64822BCSCL	BC	Left Hand Main gauche	Removable Amovible	Ball Bearing Roulement à bille	ANSI A156.7	3.3 mm	3.3 mm	4"	4"	1	1	25
64822BCSCR	BC	Right Hand Main droite	Removable Amovible	Ball Bearing Roulement à bille	ANSI A156.7	3.3 mm	3.3 mm	4"	4"	1	1	25
6822BCSCL	BC	Left Hand Main gauche	Removable Amovible	Non-ball Bearing Non roulement à bille	ANSI A156.7	3.3 mm	3.3 mm	4"	4"	1	1	25
6822BCSCR	BC	Right Hand Main droite	Removable Amovible	Non-ball Bearing Non roulement à bille	ANSI A156.7	3.3 mm	3.3 mm	4"	4"	1	1	25
64821BCSCBL	BC	Left Hand Main gauche	Removable Amovible	Ball Bearing Roulement à bille	ANSI A156.7	3.1 mm	3.1 mm	3-1/2"	3-1/2"	1	1	25
64821BCSCBR	BC	Right Hand Main droite	Removable Amovible	Ball Bearing Roulement à bille	ANSI A156.7	3.1 mm	3.1 mm	3-1/2"	3-1/2"	1	1	25
6821BCSCBL	BC	Left Hand Main gauche	Removable Amovible	Non-ball Bearing Non roulement à bille	ANSI A156.7	3.1 mm	3.1 mm	3-1/2"	3-1/2"	1	1	25
6821BCSCBR	BC	Right Hand Main droite	Removable Amovible	Non-ball Bearing Non roulement à bille	ANSI A156.7	3.1 mm	3.1 mm	3-1/2"	3-1/2"	1	1	25



65823BCSCB



64823NBSCBL



64821BCSCBR

Half-Surface Hinges Charnières semi-surface

- Non-Removable Pin
- Ball Bearing
- Square Corners
- Assembled
- Screws Included
- Goupille non amovible
- Roulement à bille
- Coins carrés
- Assemblée
- Vis incluses

NO.	FINISH FINI	POSITION	STANDARDS NORMES	GAUGE ÉPAISSEUR	GAP ÉCART	WIDTH LARGEUR	HEIGHT HAUTEUR	PK PC	BOX BTE	CASE CAISSE
64823PSHBL	P	Left Hand Main gauche	ANSI A156.7	3.4 mm	3.4 mm	4-1/2"	4-1/2"	3	1	16
64823PSHBR	P	Right Hand Main droite	ANSI A156.7	3.4 mm	3.4 mm	4-1/2"	4-1/2"	3	1	16



64823PSHBL

Half-Mortise Hinges Charnières demi-mortaise

- Non-Removable Pin
- Ball Bearing
- Square Corners
- Assembled
- Screws Included
- Goupille non amovible
- Roulement à bille
- Coins carrés
- Assemblée
- Vis incluses

NO.	FINISH FINI	POSITION	STANDARDS NORMES	GAUGE ÉPAISSEUR	GAP ÉCART	WIDTH LARGEUR	HEIGHT HAUTEUR	PK PC	BOX BTE	CASE CAISSE
64823PMHBL	P	Left Hand Main gauche	ANSI A156.7	3.4 mm	3.4 mm	4-1/2"	4-1/2"	3	1	16
64823PMHBR	P	Right Hand Main droite	ANSI A156.7	3.4 mm	3.4 mm	4-1/2"	4-1/2"	3	1	16



64823PMHBL

Weld-On Hinges Penture de porte industrielle à souder

- Removable Pin
- Non-Ball Bearing
- Square Corners
- Assembled
- Goupille amovible
- Non roulement à bille
- Coins carrés
- Coins carrés Assemblée

NO.	FINISH FINI	GAUGE ÉPAISSEUR	WIDTH LARGEUR	HEIGHT HAUTEUR	PK PC	BOX BTE	CASE CAISSE
1827PSB	PS	1.5 mm	3"	3"	1	10	100
1829PSB	PS	2.5 mm	4"	4"	1	10	100



1827PSB

Screen Hinges Charnière pour panneau

- Non-Removable Pin
- Square Corners
- Assembled
- Goupille non amovible
- Coins carrés
- Assemblée

NO.	FINISH FINI	STYLE	WIDTH LARGEUR	HEIGHT HAUTEUR	PK PC	BOX BTE	CASE CAISSE
LV118ORB	ORB	Ball Tip Embout à boule	1"	2-1/2"	1	1	300
LV228SN	SN	Ball Tip Embout à boule	1"	2-1/2"	1	1	300
LV558PB	PB	Ball Tip Embout à boule	1"	2-1/2"	1	1	300
LV668PC	C	Ball Tip Embout à boule	1"	2-1/2"	1	1	300
LVUNLW	UN	Ball Tip Embout à boule	1"	2-1/2"	1	1	300



LV558PB

Back Flap Hinges Charnières à rabat arrière

- Non-Removable Pin
- Square Corners
- Assembled
- Goupille non amovible
- Coins carrés
- Assemblée

NO.	FINISH FINI	GAUGE ÉPAISSEUR	WIDTH LARGEUR	HEIGHT HAUTEUR	SCREWS VIS	PK PC	BOX BTE	CASE CAISSE
885XB	X	1.8 mm	2-7/8"	1"	Not Included Non incluses	1	20	500
885XV	X	1.8 mm	2-7/8"	1"	Included Incluses	2	20	100
886XB	X	1.8 mm	3-1/2"	1-1/2"	Not Included Non incluses	1	20	400
886XV	X	1.8 mm	3-1/2"	1-1/2"	Included Incluses	2	20	200
887XV	X	2 mm	4-15/64"	2"	Included Incluses	2	20	100



830MATV

Split Hinges
 Charnière articulée

- Non-Assembled
- Non assemblée

NO.	FINISH FINI	POSITION	STYLE	WIDTH LARGEUR	HEIGHT HAUTEUR	PK PC	BOX BTE	CASE CAISSE
JUFTSB118L	ORB	Left Hand Main gauche	Flat Tips À tête plate	1-13/16"	3-1/8"	2	10	100
JUFTSB118R	ORB	Right Hand Main droite	Flat Tips À tête plate	1-13/16"	3-1/8"	2	10	100
JUFTSB228L	SN	Left Hand Main gauche	Flat Tips À tête plate	1-13/16"	3-1/8"	2	10	100
JUFTSB228R	SN	Right Hand Main droite	Flat Tips À tête plate	1-13/16"	3-1/8"	2	10	100
JUFTSB448L	AB	Left Hand Main gauche	Flat Tips À tête plate	1-13/16"	3-1/8"	2	10	100
JUFTSB448R	AB	Right Hand Main droite	Flat Tips À tête plate	1-13/16"	3-1/8"	2	10	100
JUFTSB558L	BB	Left Hand Main gauche	Flat Tips À tête plate	1-13/16"	3-1/8"	2	10	100
JUFTSB558R	BB	Right Hand Main droite	Flat Tips À tête plate	1-13/16"	3-1/8"	2	10	100
JUFTSBUNL	UN	Left Hand Main gauche	Flat Tips À tête plate	1-13/16"	3-1/8"	2	10	100
JUFTSBUNR	UN	Right Hand Main droite	Flat Tips À tête plate	1-13/16"	3-1/8"	2	10	100
JUFTLEFT	FB	Left Hand Main gauche	Flat Tips À tête plate	1-13/16"	3-1/8"	2	10	100
JUFTRIGHT	FB	Right Hand Main droite	Flat Tips À tête plate	1-13/16"	3-1/8"	2	10	100
ISA118L	ORB	Left Hand Main gauche	Steeple Tips Embouts conique	2-3/16"	4-5/16"	2	5	50
ISA118R	ORB	Right Hand Main droite	Steeple Tips Embouts conique	2-3/16"	4-5/16"	2	5	50
ISA228LEFT	SN	Left Hand Main gauche	Steeple Tips Embouts conique	2-3/16"	4-5/16"	2	5	50
ISA228RIGHT	SN	Right Hand Main droite	Steeple Tips Embouts conique	2-3/16"	4-5/16"	2	5	50
ISA338LEFT	PEW	Left Hand Main gauche	Steeple Tips Embouts conique	2-3/16"	4-5/16"	2	5	50
ISA338RIGHT	PEW	Right Hand Main droite	Steeple Tips Embouts conique	2-3/16"	4-5/16"	2	5	50
ISA448LEFT	AB	Left Hand Main gauche	Steeple Tips Embouts conique	2-3/16"	4-5/16"	2	5	50
ISA448RIGHT	AB	Right Hand Main droite	Steeple Tips Embouts conique	2-3/16"	4-5/16"	2	5	50
ISA558LEFT	BB	Left Hand Main gauche	Steeple Tips Embouts conique	2-3/16"	4-5/16"	2	5	50
ISA558RIGHT	BB	Right Hand Main droite	Steeple Tips Embouts conique	2-3/16"	4-5/16"	2	5	50
ISA818LEFT	FB	Left Hand Main gauche	Steeple Tips Embouts conique	2-3/16"	4-5/16"	2	5	50
ISA818RIGHT	FB	Right Hand Main droite	Steeple Tips Embouts conique	2-3/16"	4-5/16"	2	5	50
JULEFT	FB	Left Hand Main gauche	Steeple Tips Embouts conique	1-13/16"	5-1/8"	2	10	100
JURIGHT	FB	Right Hand Main droite	Steeple Tips Embouts conique	1-13/16"	5-1/8"	2	10	100
JUSB118L	ORB	Left Hand Main gauche	Steeple Tips Embouts conique	1-13/16"	5-1/8"	2	10	100
JUSB118R	ORB	Right Hand Main droite	Steeple Tips Embouts conique	1-13/16"	5-1/8"	2	10	100
JUSB228L	SN	Left Hand Main gauche	Steeple Tips Embouts conique	1-13/16"	5-1/8"	2	10	100
JUSB228R	SN	Right Hand Main droite	Steeple Tips Embouts conique	1-13/16"	5-1/8"	2	10	100
JUSB338LEFT	PEW	Left Hand Main gauche	Steeple Tips Embouts conique	1-13/16"	5-1/8"	2	10	100
JUSB338RIGHT	PEW	Right Hand Main droite	Steeple Tips Embouts conique	1-13/16"	5-1/8"	2	10	100
JUSB448LEFT	AB	Left Hand Main gauche	Steeple Tips Embouts conique	1-13/16"	5-1/8"	2	10	100
JUSB448RIGHT	AB	Right Hand Main droite	Steeple Tips Embouts conique	1-13/16"	5-1/8"	2	10	100
JUSB558LEFT	BB	Left Hand Main gauche	Steeple Tips Embouts conique	1-13/16"	5-1/8"	2	10	100
JUSB558RIGHT	BB	Right Hand Main droite	Steeple Tips Embouts conique	1-13/16"	5-1/8"	2	10	100



JUFTSB228L



ISA338RIGHT



JUSB558LEFT

Bi-Fold Hinge Charnière pliante

- Non-Removable Pin
- Square Corners
- Assembled
- Goupille non amovible
- Coins carrés
- Assemblée

NO.	FINISH FINI	CORNER TYPE TYPE DE COINS	WIDTH LARGEUR	HEIGHT HAUTEUR	SCREWS VIS	PK PC	BOX BTE	CASE CAISSE
832AEV	AE	Square Carré	1-1/4"	3"	Included Includes	3	20	100
832BB	B	Square Carré	1-1/4"	3"	Not Included Non includes	1	50	500
832BV	B	Square Carré	1-1/4"	3"	Included Includes	3	10	100
832MATV	MAT	Square Carré	1-1/4"	3"	Included Includes	3	20	100
832SNV	SN	Square Carré	1-1/4"	3"	Included Includes	3	20	100
832XIP	X	Square Carré	1-1/4"	3"	Not Included Non includes	1	-	500
832YZIP	YZ	Square Carré	1-1/4"	3"	Not Included Non includes	1	50	500
8325XIP	X	Square Carré	1-1/4"	3"	Not Included Non includes	1	-	500
7830ACV	AC	Square Carré	11/16"	2"	Included Includes	2	20	100
7830AEV	AE	Square Carré	11/16"	2"	Included Includes	2	20	100
7830MATV	MAT	Square Carré	11/16"	2"	Included Includes	2	20	100
7830PEWV	PEW	Square Carré	11/16"	2"	Included Includes	2	20	100
7831NBIP	NB	Square Carré	7/8"	2-1/2"	Not Included Non includes	1	20	500
830ACV	AC	Square Carré	15/16"	2"	Included Includes	2	20	100
830AEV	AE	Square Carré	15/16"	2"	Included Includes	2	20	100
830MATV	MAT	Square Carré	15/16"	2"	Included Includes	2	20	100



832AEV



7830ACV



830MATV

Wood Screws for Hinges Vis à bois pour charnières

NO.	FINISH FINI	LENGTH LONGUEUR	THREAD TYPE DE FILET	PK PC	BOX BTE	CASE CAISSE
5692ANIP	AN	1/2"	Regular Régulier	600	1	10
5692BIP	B	1/2"	Regular Régulier	600	1	10
5692NBIP	NB	1/2"	Regular Régulier	600	1	10
5692ORBIP	ORB	1/2"	Regular Régulier	600	1	10
5692XIP	X	1/2"	Regular Régulier	600	1	10
56925ABIP	AB	5/8"	Regular Régulier	600	1	10
56925ABIPC	AB	5/8"	Coarse Gros	600	1	10
56925ACBIP	ACB	5/8"	Regular Régulier	600	1	10
56925ANIP	AN	5/8"	Regular Régulier	600	1	10
56925ANIPC	AN	5/8"	Coarse Gros	600	1	10
56925BIP	B	5/8"	Regular Régulier	600	1	10
56925BIPC	B	5/8"	Coarse Gros	600	1	10
56925BCIP	BC	5/8"	Regular Régulier	600	1	10
56925BSIP	BS	5/8"	Regular Régulier	600	1	10
56925FBIP	FB	5/8"	Regular Régulier	600	1	10
56925NBIP	NB	5/8"	Regular Régulier	600	1	10
56925NBIPC	NB	5/8"	Coarse Gros	600	1	10
56925ORBIP	ORB	5/8"	Regular Régulier	600	1	10
56925ORBIPC	ORB	5/8"	Coarse Gros	600	1	10
56925XIP	X	5/8"	Regular Régulier	600	1	10

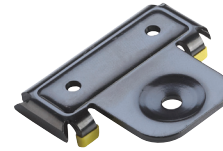
NO.	FINISH FINI	LENGTH LONGUEUR	THREAD TYPE DE FILET	PK PC	BOX BTE	CASE CAISSE
56925XIPC	X	5/8"	Coarse Gros	600	1	10
5693ABIP	AB	3/4"	Regular Régulier	600	1	10
5693ACBIP	ACB	3/4"	Regular Régulier	600	1	10
5693ACBIPC	ACB	3/4"	Coarse Gros	600	1	10
5693ANIP	AN	3/4"	Regular Régulier	600	1	10
5693BIP	B	3/4"	Regular Régulier	600	1	10
5693BCIP	BC	3/4"	Regular Régulier	600	1	10
5693BCIPC	BC	3/4"	Coarse Gros	600	1	10
5693FBIP	FB	3/4"	Regular Régulier	600	1	10
5693NBIP	NB	3/4"	Regular Régulier	600	1	10
5693NBIPC	NB	3/4"	Coarse Gros	600	1	10
5693ORBIP	ORB	3/4"	Regular Régulier	600	1	10
5693ORBIPC	ORB	3/4"	Coarse Gros	600	1	10
5693WIP	W	3/4"	Regular Régulier	600	1	10
5693XIP	X	3/4"	Regular Régulier	600	1	10
5693XIPC	X	3/4"	Coarse Gros	600	1	10
5694ANIP	AN	1"	Regular Régulier	600	1	10
5694NBIP	NB	1"	Regular Régulier	600	1	10
5694XIP	X	1"	Regular Régulier	600	1	10



5693B

Butt Hinge Marker
Marqueur de charnière

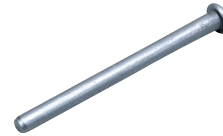
NO.	HEIGHT HAUTEUR	PK PC	BOX BTE	CASE CAISSE
BM820R	3"	1	5	100
BM821R	3-1/2"	1	5	100
BM822R	4"	1	5	100



BM820

Hinge Pin
Tige pour penture

NO.	FINISH FINI	HEIGHT HAUTEUR	PK PC	BOX BTE	CASE CAISSE
822PINCABIP	AB	4"	1	-	100
822PINCANIP	AN	4"	1	-	100
822PINCBBIP	BB	4"	1	-	100
822PINCNBIP	NB	4"	1	-	100
822PINCORBIP	ORB	4"	1	-	100
820PINABIP	AB	3"	1	100	1000
820PINANIP	AN	3"	1	100	1000
820PINBIP	B	3"	1	100	1000
820PINBCIP	BC	3"	1	100	1000
820PINFBIP	FB	3"	1	100	1000
820PINNBIP	NB	3"	1	100	1000
820PINORBIP	ORB	3"	1	100	1000
820PINWIP	W	3"	1	100	1000
820PINXIP	X	3"	1	100	1000



820PINNBIP

Adjustable Spring Tension Pin
Goupille de tension pour charnière à ressort réglable

NO.	FOR HINGE POUR CHARNIÈRE	PK PC	BOX BTE	CASE CAISSE
CRABPIN	CRAB	100	10	90
CRBBPIN	CRBB	100	10	90
CRBLPIN	CRBL	100	10	90
CRORBPIN	CRORB	100	10	90
CRPWPIN	CRPW	100	10	90
CRSCPIN	CRSC	100	10	90
CRSNPIN	CRSN	100	10	90
CRWHPIN	CRWH	100	10	90



CRBBPIN

