


Sliding and Bifold Door Hardware



The background of the page is a photograph of a room with light blue walls, a white door, and a window. A dark grey semi-transparent box is overlaid on the center of the image, containing a table of contents.

Packaging	3
Bypass Door Hardware	4
ACME Bypass Door Hardware	13
Pocket Door Hardware	18
ACME Pocket Door Hardware	21
Cavilock Sliding Door Pulls	25
INOX Mortise Locks for Sliding Doors	29
Bifold Door Hardware	31
Wardrobe Pivots	41

3 EASY WAYS TO ORDER

1



Visit
www.onwardhardware.com

2



Call our toll-free number
1 800 387-6392

3



Fax in your order at our
toll-free number **1 800 560-1306**

PACKAGING TYPE

The packaging type of our products can be found in the last letter(s) of the part number. Please see below for details on packaging codes.

BC

Bulk with UPC

.....

IP

Bulk Packed Assembled

.....

R

Rack Pack

Hang Up Display Package with Screws and UPC

.....

V

Venda Pack

Poly-bagged with screws and UPC

Bypass Door Hardware

Bypass Door Hardware Kit with Track

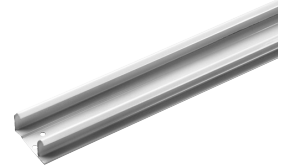
- Includes: 1 Sliding door track (zinc), 1 Adjustable floor guide, 4 Dial-adjust door hangers, 2 Brass plated finger pulls, and necessary fasteners
- Door Thickness: 3/4" - 1-3/8" (19 mm - 35 mm)
- Number of Doors: 2
- Max. Load per Door: 60 lb (27 kg)
- Roller Type: Axle (Bushing)



NO.	DOOR WIDTH	LENGTH	BOX	CASE
14648BC	24" (610 mm)	48" (1219 mm)	1	10
14660BC	30" (762 mm)	60" (1524 mm)	1	6
14672BC	36" (914 mm)	72" (1829 mm)	1	6
14696BC	48" (1219 mm)	96" (2438 mm)	1	2

Individual Track

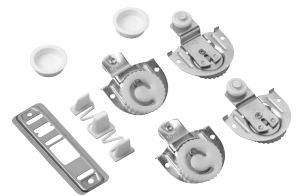
- Max. Load per Door: 60 lb (27 kg)



NO.	FINISH	LENGTH	BOX	CASE
14648WIP	White	46-3/8" (1178 mm)	1	16
14660WIP	White	58-3/8" (1483 mm)	1	16
14672WIP	White	70-3/8" (1788 mm)	1	16
14696WIP	White	93-3/8" (2372 mm)	1	16
146144WIP	White	144" (3658 mm)	1	10

Bypass Door Hardware Kit

- Door Thickness: 3/4" - 1-3/8" (19 mm - 35 mm)
- Max. Load per Door: 60 lb (27 kg)
- Roller Type: Axle (Bushing)



NO.	FINISH	BOX	CASE
14610IP	White	1	50
14611IP	Chrome (C26)	1	50
14612IP	Satin Nickel (C15)	1	50

Offset Adjustable Dial

- Max. Load per Door: 60 lb (27 kg)
- Roller Type: Axle (Bushing)



NO.	FINISH	OFFSET	PK	BOX	CASE
1473XR	Zinc (C2G)	7/16" (11 mm)	1	5	50
1474XR	Zinc (C2G)	1/8" (3 mm)	1	5	50

Sliding Door Stop

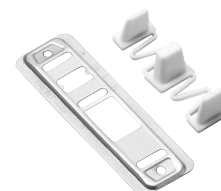
- For bypass door kits



NO.	PK	BOX	CASE
1432R	1	5	120

Bypass Door Floor Glide

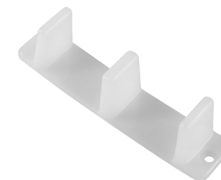
- Type of Door: Wood
- Door Thickness: 3/4" - 1-3/8" (19 mm - 35 mm)
- Number of Doors: 2



NO.	FINISH	PK	CASE
1471NV	Nickel	1	50

Bypass Door Floor Glide

- Type of Door: Wood
- Door Thickness: 1-3/8" (35 mm)
- Number of Doors: 2



NO.	FINISH	PK	CASE
147138WIP	White	1	100

Bypass Door Hardware

Stile - H

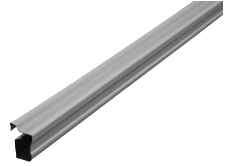
- For framed bypass doors
- Use with mirror/panel doors with 3-4 mm thick inserts



NO.	FINISH	LENGTH	PK	CASE
145SH930WIP	White	93" (2362 mm)	1	20
145SH935WIP	White	93-1/2" (2375 mm)	1	20
145SH960WIP	White	96" (2438 mm)	1	20
145SH108WIP	White	108" (2743 mm)	1	20

Stile - D

- For framed bypass doors
- Use with mirror/panel doors with 3-4 mm thick inserts



NO.	FINISH	LENGTH	PK	CASE
145S0780WIP	White	78" (433 mm)	1	20
145S0785WIP	White	78-1/2" (573 mm)	1	20
145S0790WIP	White	79" (586 mm)	1	20
145S0795WIP	White	79-1/2" (598 mm)	1	20
145S0840WIP	White	84" (649 mm)	1	20
145S0870WIP	White	87" (725 mm)	1	20
145S0875WIP	White	87-1/2" (738 mm)	1	20
145S089WIP	White	89" (802 mm)	1	20
145S0895WIP	White	89-1/2" (878 mm)	1	20
145S090WIP	White	90" (891 mm)	1	20
145S0905WIP	White	90-1/2" (979 mm)	1	20
145S091WIP	White	91" (1030 mm)	1	20
145S092WIP	White	92" (1081 mm)	1	20
145S0925WIP	White	92-1/2" (1132 mm)	1	20
145S093WIP	White	93" (1183 mm)	1	20
145S0935WIP	Silver	93-1/2" (1195 mm)	1	20
145S0960GLIP	Gold	96" (1195 mm)	1	10
145S0960SIIP	Silver	96" (2438 mm)	1	10

Rail - H

- For framed bypass doors
- Use with mirror/panel doors with 3-4 mm thick inserts



NO.	FINISH	LENGTH	PK	CASE
145RH29WIP	White	29" (737 mm)	1	40
145RH35WIP	White	35" (889 mm)	1	40
145RH44WIP	White	44" (1118 mm)	1	40
145RH96GLIP	Gold	96" (2438 mm)	1	40
145RH96SIP	Silver	96" (2438 mm)	1	40
145RH96WIP	White	96" (2438 mm)	1	40

Rail - D

- For framed/frameless bypass doors
- Use with mirror/panel doors with 3-4 mm thick inserts



NO.	FINISH	LENGTH	PK	CASE
145R17116WIP	White	17-1/16" (433 mm)	1	40
145R22916WIP	White	22-9/16" (573 mm)	1	40
145R23116WIP	White	23-1/16" (586 mm)	1	40
145R23916WIP	White	23-9/16" (598 mm)	1	40
145R25916WIP	White	25-9/16" (649 mm)	1	40
145R28916WIP	White	28-9/16" (725 mm)	1	40
145R29116WIP	White	29-1/16" (738 mm)	1	40
145R31916WIP	White	31-9/16" (802 mm)	1	40
145R34916GLIP	Gold	34-9/16" (878 mm)	1	40
145R35116WIP	White	35-1/16" (891 mm)	1	40
145R38916WIP	White	38-9/16" (979 mm)	1	40
145R40916WIP	White	40-9/16" (1030 mm)	1	40
145R42916WIP	White	42-9/16" (1081 mm)	1	40
145R44916WIP	White	44-9/16" (1132 mm)	1	40
145R46916WIP	White	46-9/16" (1183 mm)	1	40
145R47116SIP	Silver	47-1/16" (1195 mm)	1	40
145R47116WIP	White	47-1/16" (1195 mm)	1	40
145R096WIP	White	96" (2438 mm)	1	40

Bypass Door Hardware

Top Track

- For mirror/panel doors



NO.	FINISH	LENGTH	PK	CASE
145TT096WIP	White	96" (2438 mm)	1	10
145TT108WIP	White	108" (2743 mm)	1	10
145TT120WIP	White	120" (3048 mm)	1	10
145TT144WIP	White	144" (3658 mm)	1	10

Top Track Fascia

- Use with Onward 145TT series Top Track



NO.	FINISH	LENGTH	PK	CASE
145F096WIP	White	96" (2438 mm)	1	10
145F144WIP	White	144" (3658 mm)	1	10

Top Track with Fascia

- For mirror/panel doors



NO.	FINISH	LENGTH	PK	CASE
145FT144SIIP	Silver	144" (3658 mm)	1	4
145FT144WIP	White	144" (3658 mm)	1	4
145FT192WIP	White	192" (4877 mm)	1	4

Frameless Stile

- For frameless bypass doors



NO.	FINISH	LENGTH	PK	CASE
145FR771516SIIP	Silver	77-15/16" (1980 mm)	1	20
145FR940SIIP	Silver	94" (2388 mm)	1	20

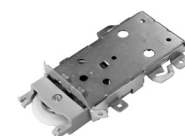
Bottom Track



NO.	FINISH	LENGTH	PK	CASE
145BT036WIP	White	36" (914 mm)	1	10
145BT084WIP	White	84" (2134 mm)	1	10
145BT096WIP	White	96" (2438 mm)	1	10
145BT120WIP	White	120" (3048 mm)	1	10
145BT144WIP	White	144" (3658 mm)	1	10
145BT192WIP	White	192" (4877 mm)	1	10

Ball Bearing Bottom Roller

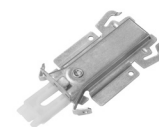
- Use with Onward 145BT series Bottom Track



NO.	STYLE	PK	CASE
1451BBRXIP	D	1	100

Bypass Bottom Glide HDPE

- Use with Onward 145BT series Bottom Track



NO.	STYLE	PK	CASE
1451BGXIP	D	1	100

Bypass Bottom Roller

- Use with Onward 145BT series Bottom Track



NO.	STYLE	PK	CASE
1451BRXIP	D	1	100

Bypass Door Hardware

Ball Bearing Bottom Roller

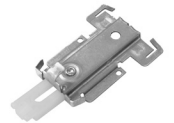
- Use with Onward 145BT series Bottom Track



NO.	STYLE	PK	CASE
1451HBBRXIP	H	1	100

Bypass Bottom Glide HDPE

- Use with Onward 145BT series Bottom Track



NO.	STYLE	PK	CASE
1451HBGXIP	H	1	100

Bypass Bottom Roller

- Use with Onward 145BT series Bottom Track



NO.	STYLE	PK	CASE
1451HBRXIP	H	1	100

Bypass Top Roller with Spring

- Use with Onward 145TT series Top Track



NO.	STYLE	PK	CASE
1451STRXIP	D	1	100

Bypass Top Roller

- Use with Onward 145FT series Top Track with Fascia



NO.	STYLE	PK	CASE
1451TRXIP	D	1	100

Bypass Top Roller with Spring

- Use with Onward 145TT series Top Track



NO.	STYLE	PK	CASE
1451HSTRXIP	H	1	100

Bypass Top Roller

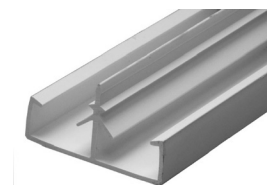
- Use with Onward 145TT series Top Track



NO.	STYLE	PK	CASE
1451HTRXIP	H	1	100

T-Molding - Panel Clip

- Material: PVC
- Length: 8' (2.44 m)



NO.	FINISH	PK	CASE
145PNCL	White	1	25

Bypass Door Hardware

Rail Notching Tool

- Use with Onward 145R or 145RH series Rail



NO.	STYLE	PK
145RHNOTCH	H	1
145RNOTCH	D	1

Stile Notching Tool

- Use with Onward 145S, 145SH, or 145FR series Stiles



NO.	STYLE	PK
145FRNOTCH	Frameless	1
145SHNOTCH	H	1
145SNOTCH	D	1

Rail Notching Tool Replacement Blade

- Use with Onward 145R series Rail Notching Tools



NO.	STYLE	PK
145RHNBLADE	H	1
145RNBLADE	D	1

Stile Notching Tool Replacement Blade

- Use with Onward 145S or 145FR series Stile Notching Tools



NO.	STYLE	PK
145FRNBLADE	Frameless	1
145SHNBLADE	H	1
145SNBLADE	D	1

3-4 mm Rail



- For framed/frameless bypass doors
- Use with ACME 145S series 3-4 mm Slimline Framed Stile
- Use with mirror/panel doors with 3-4 mm thick inserts
- Material: Metal with protective film



NO.	ACME PART #	FINISH	LENGTH	PK	CASE
145R23116SIFIP	HW3101AS01A002301	Silver	23-1/16" (586 mm)	1	40
145R23116WFIP	HW3101BW01A002301	White	23-1/16" (586 mm)	1	40
145R29116SIFIP	HW3101AS01A002901	Silver	29-1/16" (738 mm)	1	40
145R29116WFIP	HW3101BW01A002901	White	29-1/16" (738 mm)	1	40
145R34916WFIP	HW3101BW01A003409	White	34-1/16" (865 mm)	1	40
145R35116SIFIP	HW3101AS01A003501	Silver	35-1/16" (891 mm)	1	40
145R35116WFIP	HW3101BW01A003501	White	35-1/16" (891 mm)	1	40
145R47116SIFIP	HW3101AS01A004701	Silver	47-1/16" (1195 mm)	1	40
145R47116WFIP	HW3101BW01A004701	White	47-1/16" (1195 mm)	1	40
145R096SIFIP	HW3101AS01A009600	Silver	96" (2438 mm)	1	40

3-4 mm Slimline Framed Stile



- For framed bypass doors
- Use with ACME 145R series 3-4 mm Rail
- Use with mirror/panel doors with 3-4 mm thick inserts
- Material: Metal with protective film



NO.	ACME PART #	FINISH	LENGTH	PK	CASE
145S0780SIFIP	HW4101AS01A007800	Silver	78" (1981 mm)	1	20
145S0780WFIP	HW4101BW01A007800	White	78" (1981 mm)	1	20
145S0935SIFIP	HW4101AS01A009308	Silver	93-1/2" (2375 mm)	1	20
145S0935WFIP	HW4101BW01A009308	White	93-1/2" (2375 mm)	1	20
145S0960SIFIP	HW4101AS01A009600	Silver	96" (2438 mm)	1	20
145S0960WFIP	HW4101BW01A009600	White	96" (2438 mm)	1	20

3-4 mm Frameless Stile



- For frameless bypass doors
- Use with ACME 145R series 3-4 mm Rail
- Material: Metal with protective film



NO.	ACME PART #	FINISH	LENGTH	PK	CASE
145FRS780WIP	HW3006BW01A007800	White	78" (1981 mm)	1	20
145FRS960SIIP	HW3006AS01A009600	Silver	96" (2438 mm)	1	20
145FRS960WIP	HW3006BW01A009600	White	96" (2438 mm)	1	20

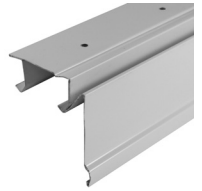
Rail and stile notching tools are available through special order.

Bypass Door Hardware

"J" Fascia Top Track



- For mirror/panel doors
- Use with ACME 145 series Bypass Door Hardware
- Material: Metal with protective film



NO.	ACME PART #	FINISH	LENGTH	PK	CASE
145FT048WFIP	HW1001BW01A004800	White	48" (1219 mm)	1	10
145FT060WFIP	HW1001BW01A006000	White	60" (1524 mm)	1	10
145FT072WFIP	HW1001BW01A007200	White	72" (1829 mm)	1	10
145FT096WFIP	HW1001BW01A009600	White	96" (2438 mm)	1	10

"E" Top Track



- Use with ACME 1451ETGXRIP Top Plastic Guide
- Material: Metal with protective film



NO.	ACME PART #	FINISH	LENGTH	PK	CASE
145TTE048WFIP	HW2201BW01B004800	White	48" (1219 mm)	1	4
145TTE060WFIP	HW2201BW01B006000	White	60" (1524 mm)	1	4
145TTE072WFIP	HW2201BW01B007200	White	72" (1829 mm)	1	4
145TTE096SIFIP	HW2201AS01B009600	Silver	96" (2438 mm)	1	4
145TTE096WFIP	HW2201BW01B009600	White	96" (2438 mm)	1	4

Bottom Track



- Use with ACME 145BRXRIP Anti-Jump Roller Bottom Guide



NO.	ACME PART #	FINISH	LENGTH	PK	CASE
145BT048SIRIP	HW1601AS01B004800	Silver	48" (1219 mm)	1	10
145BT048WRIP	HW1601BW01B004800	White	48" (1219 mm)	1	10
145BT060SIRIP	HW1601AS01B006000	Silver	60" (1524 mm)	1	10
145BT060WRIP	HW1601BW01B006000	White	60" (1524 mm)	1	10
145BT072SIRIP	HW1601AS01B007200	Silver	72" (1829 mm)	1	10
145BT072WRIP	HW1601BW01B007200	White	72" (1829 mm)	1	10
145BTT096WIP*	HW1602BW01B009600	White	96" (2438 mm)	1	10

* Thicker gauge metal to support a higher weight load

Top Plastic Guide



- Use with ACME 145TTE series "E" Top Track



NO.	ACME PART #	PK	CASE
1451ETGXRIP	HW52040	1	100

Top Roller Guide with Spring



- Use with ACME 145FT series "J" Fascia Top Track



NO.	ACME PART #	PK	CASE
1451STRXRIP	HW52030	1	100

Anti-Jump Roller Bottom Guide



- Use with ACME 145BT series Bottom Track
- Max. Load per Door: 85 lb (39 kg)



NO.	ACME PART #	PK	CASE
1451BRXRIP	HW51030	1	100

Bypass Door Hardware

End Caps



- Use with ACME 145R series 3-4 mm Rail
- Use with frameless bypass rails



NO.	ACME PART #	PK	CASE
1451ECIP	HW99010	2	100

Pull



- For frameless bypass doors



NO.	ACME PART #	FINISH	PK	CASE
1451PCLIP	HW95010-CL	Clear	1	12

Recessed Pull

- Diameter: 2-1/8" (54 mm)
- Door Thickness: Min. 1" (25 mm)
- Fixing Technique: Flush



NO.	FINISH	PK	BOX	CASE
2345ABV	Antique Brass (C5)	1	20	200
2345ANV	Antique Nickel (C15A)	1	20	200
2345BV	Brass (C3-4)	1	20	200
2345CV	Chrome (C26)	1	20	200
2345ORBV	Oil-Rubbed Bronze (C10B)	1	20	200
2345SCV	Satin Chrome (C26D)	1	20	200
2345SNV	Satin Nickel (C15)	1	20	200

Contemporary Recessed Pull

- Diameter: 3/4" (19 mm)
- Fixing Technique: Flush



NO.	FINISH	PK	BOX	CASE
234BV	Brass (C3-4)	4	20	100
234NV	Nickel	4	20	100

Flush Pull

- Fixing Technique: Flush



NO.	FINISH	PK	BOX	CASE
233CR	Chrome (C26)	1	5	60
233NBR	Brushed Nickel (C15)	1	5	60

Pocket Door Hardware

Knockdown Pocket Door Frame with Hardware Kit

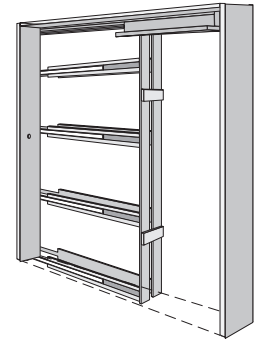
- Complete steel system for 2x4 construction
- Adjustable width
- Includes: Two roller carriers with 4 ball bearings and an extruded aluminum track. Steel studs have wood inserts to attach plywood panels
- Door Thickness: 1-3/8" - 1-3/4" (35 mm - 44 mm)



NO.	DOOR WIDTH	MAX. LOAD PER DOOR	ROLLER TYPE	MAX. DOOR HEIGHT	CASE
148150BC	24" - 36" (610 mm - 914 mm)	150 lb (68 kg)	Axle (Bushing)	80" (2032 mm)	1
1485150BC	24" - 36" (610 mm - 914 mm)	150 lb (68 kg)	Ball Bearing	80" (2032 mm)	1
1488150BC	24" - 36" (610 mm - 914 mm)	150 lb (68 kg)	Ball Bearing	96" (2438 mm)	1
1488250BC	24" - 48" (610 mm - 1219 mm)	250 lb (113 kg)	Ball Bearing	96" (2438 mm)	1

Pre-Built Pocket Door Frame with Hardware Kit

- The jump-proof track is constructed of corrosion-resistant aluminum
- Includes: 1 pre-built adjustable pocket door frame, 1 track mounted into a wood header, 1 door bumper, 2 door hangers and plates, 1 set of door glides, and all nails and screws required for mounting. Door panel and trim not included
- Door Thickness: 1-3/8" - 1-3/4" (35 mm - 44 mm)



NO.	DOOR WIDTH	MAX. LOAD PER DOOR	ROLLER TYPE	MAX. DOOR HEIGHT	CASE	MOQ
149150BC	24" - 36" (610 mm - 914 mm)	150 lb (68 kg)	Axle (Bushing)	80" (2032 mm)	1	10
149150BC1	24" - 36" (610 mm - 914 mm)	150 lb (68 kg)	Axle (Bushing)	80" (2032 mm)	1	1

Pocket/Pocketless Door Hardware Kit

- Jump-proof V-shaped track
- Includes: 1 track, 2 door hangers, 1 wall-mounted door bumper (for pocket door), 1 floor-mounted bumper (for pocketless door), 1 set of wall/floor glides, and all necessary screws for mounting
- Door Thickness: 3/4" - 1-3/4" (19 mm - 44 mm)



NO.	LENGTH	MAX. DOOR WIDTH	MAX. LOAD PER DOOR	ROLLER TYPE	PK	CASE
148075BC	72" (1829 mm)	36" (914 mm)	75 lb (34 kg)	Axle (Bushing)	1	6

Pocket Door Track - 147 Series

- Material: Aluminum



NO.	FINISH	LENGTH	PK	CASE
14704625IP	Aluminum	46-1/4" (1175 mm)	1	12
14705425IP	Aluminum	54-1/4" (1378 mm)	1	12
14705825IP	Aluminum	58-1/4" (1480 mm)	1	12
14706225IP	Aluminum	62-1/4" (1581 mm)	1	12
14707025IP	Aluminum	70-1/4" (1784 mm)	1	12
14709425IP	Aluminum	94-1/4" (2394 mm)	1	12
147120IP	Aluminum	120" (3048 mm)	1	12
147144IP	Aluminum	144" (3658 mm)	1	12
147192IP	Aluminum	192" (4877 mm)	1	12

Pocket Door Hardware Kit, Snap-In Mount

- Use with Onward 147 Series Pocket Door Track



NO.	FINISH	MAX. LOAD PER DOOR	ROLLER TYPE	PK	CASE
246150PDHDWIP	Yellow Zinc (C2D)	150 lb (68 kg)	Axle (Bushing)	1	10
246PDHDWIP	Yellow Zinc (C2D)	250 lb (113 kg)	Ball Bearing	1	10

Pocket Door Hanger Kit, Snap-In Mount

- Use with Onward 148 Series Knockdown Pocket Door Frames & Onward 149 Series Pre-Built Pocket Door Frames

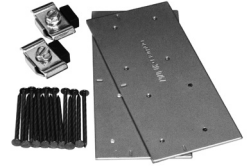


NO.	FINISH	MAX. LOAD PER DOOR	ROLLER TYPE	PK	CASE
246150N41IP	Yellow Zinc (C2D)	150 lb (68 kg)	Axle (Bushing)	1	10
246250N41IP	Yellow Zinc (C2D)	250 lb (113 kg)	Ball Bearing	1	10

Pocket Door Hardware

Bi-Parting Pocket Door Hardware Kit

- Used to join two pocket door frames together
- Keeps door frames in alignment
- Includes: 2 plates and 2 door stops



NO.	PK	CASE
24625005IP	1	10

Pocket Door Stop

- For biparting applications



NO.	FINISH	PK	BOX	CASE
1476XIP	Zinc (C2G)	1	50	500

Jamb Stiffener



NO.	FINISH	LENGTH	PK	CASE
149JSIP	White	81-3/4" (2076 mm)	1	40
149JS96IP	White	96" (2438 mm)	1	40

Upright Splice

- Allows you to set two pocket doors in front of one another



NO.	FINISH	PK	CASE
149FPIP	Zinc (C2G)	1	250

Pocket Door Track



NO.	ACME PART #	FINISH	LENGTH	PK	CASE
147J5275IP	HW10004-05212-AL	Aluminum	52-3/4" (1340 mm)	1	25
147J5675IP	HW10004-05612-AL	Aluminum	56-3/4" (1441 mm)	1	25
147J6075IP	HW10004-06012-AL	Aluminum	60-3/4" (1543 mm)	1	25
147J6675IP	HW10004-06612-AL	Aluminum	66-3/4" (1695 mm)	1	25
147J6875IP	HW10004-06812-AL	Aluminum	68-3/4" (1746 mm)	1	25
1479275IP	HW10004-09212-AL	Aluminum	92-3/4" (2356 mm)	1	25

3-Wheel Pocket Door Hardware



- Use with ACME 147J series Pocket Door Track



NO.	ACME PART #	MAX. LOAD PER DOOR	ROLLER TYPE	PK	CASE
147PDHDW125	HW3WPDSET125	125 lb (57 kg)	Axle (Bushing)	1	50
147PDHDW200	HW3WPDSET200	200 lb (91 kg)	Ball Bearing	1	50

Jamb Stiffener (Unpunched)



NO.	ACME PART #	FINISH	LENGTH	PK	CASE
149JS791216WIP	HW6575BW01B007912	White	79-3/4" (2026 mm)	1	40

Pocket Door Hardware

Fixed Pocket Door Guide

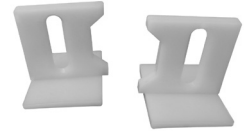
- Door Thickness: 1-3/8" (35 mm)



NO.	FINISH	PK	BOX	CASE
24625074IP	White	1	50	400

Adjustable 2 Piece Pocket Door Guide

- Door Thickness: 1-3/8" - 1-3/4" (35 mm - 44 mm)
- Screws included



NO.	FINISH	PK	BOX	CASE
1477WIP	White	1	50	1000

2-3/4" Latch

- Use with Onward 17S & 17R Series Pocket Door Locks
- Backset: 2-3/4" (70 mm)



NO.	FINISH	FUNCTION	PK	BOX	CASE
17PDL275AN10	Antique Nickel (C15A)	Passage	1	10	100
17PDL275AN42	Antique Nickel (C15A)	Privacy	1	10	100
17PDL275C10	Chrome (C26)	Passage	1	10	100
17PDL275C42	Chrome (C26)	Privacy	1	10	100
17PDL275FB10	Flat Black	Passage	1	10	100
17PDL275FB42	Flat Black	Privacy	1	10	100
17PDL275NB10	Brushed Nickel (C15)	Passage	1	10	100
17PDL275NB42	Brushed Nickel (C15)	Privacy	1	10	100
17PDL275ORB10	Oil-Rubbed Bronze (C10B)	Passage	1	10	100
17PDL275ORB42	Oil-Rubbed Bronze (C10B)	Privacy	1	10	100
17PDL275PB10	Polished Brass (C3)	Passage	1	10	100
17PDL275PB42	Polished Brass (C3)	Privacy	1	10	100
17PDL275SC10	Satin Chrome (26D)	Passage	1	10	100
17PDL275SC42	Satin Chrome (26D)	Privacy	1	10	100

Pocket Door Pull - Round - Passage & Privacy

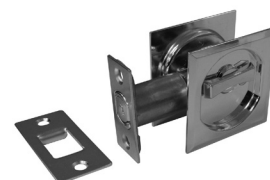
- Backset: 2-3/8" (60 mm)
- 2-3/4" (70 mm) latch available as separate item
- Door Thickness: 1-3/8" - 1-3/4" (35 mm - 44 mm)
- Fixing Technique: Flush
- Opening: Reversible for left or right



NO.	FINISH	FUNCTION	PK	CASE
17RAN10	Antique Nickel (C15A)	Passage	1	60
17RAN42	Antique Nickel (C15A)	Privacy	1	60
17RBB10	Bright Brass (C3)	Passage	1	60
17RBB42	Bright Brass (C3)	Privacy	1	60
17RBC10	Brushed Chrome (C26D)	Passage	1	60
17RBC42	Brushed Chrome (C26D)	Privacy	1	60
17RC10	Chrome (C26)	Passage	1	60
17RC42	Chrome (C26)	Privacy	1	60
17RFB10	Flat Black	Passage	1	60
17RFB42	Flat Black	Privacy	1	60
17RNB10	Brushed Nickel (C15)	Passage	1	60
17RNB42	Brushed Nickel (C15)	Privacy	1	60
17RORB10	Oil-Rubbed Bronze (C10B)	Passage	1	60
17RORB42	Oil-Rubbed Bronze (C10B)	Privacy	1	60

Pocket Door Pull - Square - Passage & Privacy

- Backset: 2-3/8" (60 mm)
- 2-3/4" (70 mm) latch available as separate item
- Door Thickness: 1-3/8" - 1-3/4" (35 mm - 44 mm)
- Fixing Technique: Flush
- Opening: Reversible for left or right



NO.	FINISH	FUNCTION	PK	CASE
17SAN10	Antique Nickel (C15A)	Passage	1	60
17SAN42	Antique Nickel (C15A)	Privacy	1	60
17SBB10	Bright Brass (C3)	Passage	1	60
17SBB42	Bright Brass (C3)	Privacy	1	60
17SBC10	Brushed Chrome (C26D)	Passage	1	60
17SBC42	Brushed Chrome (C26D)	Privacy	1	60
17SC10	Chrome (C26)	Passage	1	60
17SC42	Chrome (C26)	Privacy	1	60
17SFB10	Flat Black	Passage	1	60
17SFB42	Flat Black	Privacy	1	60
17SNB10	Brushed Nickel (C15)	Passage	1	60
17SNB42	Brushed Nickel (C15)	Privacy	1	60
17SORB10	Oil-Rubbed Bronze (C10B)	Passage	1	60
17SORB42	Oil-Rubbed Bronze (C10B)	Privacy	1	60

Pocket Door Hardware

Pocket Door Pull - Rectangular - Passage & Privacy

- Door Thickness: 1-3/8" - 1-3/4" (35 mm - 44 mm)
- Screws included
- Fixing Technique: Flush
- Opening: Reversible for left or right



NO.	FINISH	FUNCTION	PK	CASE
17AN10	Antique Nickel (C15A)	Passage	1	50
17AN42	Antique Nickel (C15A)	Privacy	1	50
17BB10	Bright Brass (C3)	Passage	1	50
17BB42	Bright Brass (C3)	Privacy	1	50
17BC10	Brushed Chrome (C26D)	Passage	1	50
17BC42	Brushed Chrome (C26D)	Privacy	1	50
17C10	Chrome (C26)	Passage	1	50
17C42	Chrome (C26)	Privacy	1	50
17FB10	Flat Black	Passage	1	50
17FB42	Flat Black	Privacy	1	50
17NB10	Brushed Nickel (C15)	Passage	1	50
17NB42	Brushed Nickel (C15)	Privacy	1	50
17ORB10	Oil-Rubbed Bronze (C10B)	Passage	1	50
17ORB42	Oil-Rubbed Bronze (C10B)	Privacy	1	50

Cavilock CL400 Magnetic Passage Pull



- Positive "hold close"
- Flush striker and lock face
- No mortise cut-out required



NO.	FINISH	DOOR THICKNESS	PK	CASE
CL400A0028	Chrome (C26)	1-3/8" (34 mm)	1	4
CL400A0128	Satin Chrome (26D)	1-3/8" (34 mm)	1	4
CL400A0328	Satin Nickel (US15)	1-3/8" (34 mm)	1	4
CL400A0029	Chrome (C26)	1-3/4" (45 mm)	1	4
CL400A0129	Satin Chrome (26D)	1-3/4" (45 mm)	1	4
CL400A0329	Satin Nickel (US15)	1-3/4" (45 mm)	1	4

Cavilock CL400 Magnetic Privacy Pull



- Smooth locking action
- Flush striker and lock face
- No mortise cut-out required



NO.	FINISH	POSITION	DOOR THICKNESS	PK	CASE
CL400B0028	Chrome (C26)	Right	1-3/8" (34 mm)	1	4
CL400B0128	Satin Chrome (26D)	Right	1-3/8" (34 mm)	1	4
CL400B0328	Satin Nickel (US15)	Right	1-3/8" (34 mm)	1	4
CL400B0033	Chrome (C26)	Right	1-3/4" (45 mm)	1	4
CL400B0133	Satin Chrome (26D)	Right	1-3/4" (45 mm)	1	4
CL400B0333	Satin Nickel (US15)	Right	1-3/4" (45 mm)	1	4
CL400B0029	Chrome (C26)	Left	1-3/8" (34 mm)	1	4
CL400B0129	Satin Chrome (26D)	Left	1-3/8" (34 mm)	1	4
CL400B0329	Satin Nickel (US15)	Left	1-3/8" (34 mm)	1	4
CL400B0034	Chrome (C26)	Left	1-3/4" (45 mm)	1	4
CL400B0134	Satin Chrome (26D)	Left	1-3/4" (45 mm)	1	4
CL400B0334	Satin Nickel (US15)	Left	1-3/4" (45 mm)	1	4

Pocket Door Hardware

CaviLock CL400 Barrier Free Magnetic Passage Pull



- Positive "hold close"
- Barrier free/ADA compliant
- Flush striker and lock face
- No mortise cut-out required



NO.	FINISH	DOOR THICKNESS	PK	CASE
CL406A0028	Chrome (C26)	1-3/8" (34 mm)	1	3
CL406A0128	Satin Chrome (26D)	1-3/8" (34 mm)	1	3
CL406A0328	Satin Nickel (US15)	1-3/8" (34 mm)	1	3
CL406A0029	Chrome (C26)	1-3/4" (45 mm)	1	3
CL406A0129	Satin Chrome (26D)	1-3/4" (45 mm)	1	3
CL406A0329	Satin Nickel (US15)	1-3/4" (45 mm)	1	3

CaviLock CL400 Barrier Free Magnetic Privacy Pull



- Smooth locking action
- Barrier free/ADA compliant
- Flush striker and lock face
- No mortise cut-out required



NO.	FINISH	POSITION	DOOR THICKNESS	PK	CASE
CL406B0028	Chrome (C26)	Right	1-3/8" (34 mm)	1	3
CL406B0128	Satin Chrome (26D)	Right	1-3/8" (34 mm)	1	3
CL406B0328	Satin Nickel (US15)	Right	1-3/8" (34 mm)	1	3
CL406B0033	Chrome (C26)	Right	1-3/4" (45 mm)	1	3
CL406B0133	Satin Chrome (26D)	Right	1-3/4" (45 mm)	1	3
CL406B0333	Satin Nickel (US15)	Right	1-3/4" (45 mm)	1	3
CL406B0029	Chrome (C26)	Left	1-3/8" (34 mm)	1	3
CL406B0129	Satin Chrome (26D)	Left	1-3/8" (34 mm)	1	3
CL406B0329	Satin Nickel (US15)	Left	1-3/8" (34 mm)	1	3
CL406B0034	Chrome (C26)	Left	1-3/4" (45 mm)	1	3
CL406B0134	Satin Chrome (26D)	Left	1-3/4" (45 mm)	1	3
CL406B0334	Satin Nickel (US15)	Left	1-3/4" (45 mm)	1	3

Cavilock CL400 Barrier Free Magnetic Bi-Parting Passage Pull



- Positive "hold close"
- Barrier free/ADA compliant
- Flush striker and lock face
- No mortise cut-out required



NO.	FINISH	DOOR THICKNESS	PK	CASE
CL406D0028	Chrome (C26)	1-3/8" (34 mm)	1	3
CL406D0128	Satin Chrome (26D)	1-3/8" (34 mm)	1	3
CL406D0328	Satin Nickel (US15)	1-3/8" (34 mm)	1	3
CL406D0029	Chrome (C26)	1-3/4" (45 mm)	1	3
CL406D0129	Satin Chrome (26D)	1-3/4" (45 mm)	1	3
CL406D0329	Satin Nickel (US15)	1-3/4" (45 mm)	1	3

Cavilock CL400 Barrier Free Magnetic Bi-Parting Privacy Pull



- Smooth locking action
- Barrier free/ADA compliant
- Flush striker and lock face
- No mortise cut-out required



NO.	FINISH	DOOR THICKNESS	PK	CASE
CL406D0038	Chrome (C26)	1-3/8" (34 mm)	1	3
CL406D0138	Satin Chrome (26D)	1-3/8" (34 mm)	1	3
CL406D0338	Satin Nickel (US15)	1-3/8" (34 mm)	1	3
CL406D0043	Chrome (C26)	1-3/4" (45 mm)	1	3
CL406D0143	Satin Chrome (26D)	1-3/4" (45 mm)	1	3
CL406D0343	Satin Nickel (US15)	1-3/4" (45 mm)	1	3

Pocket Door Hardware

Cavilock CL200 Passage Pull



- No mortise cut-out required
- Opening: Reversible for left or right



NO.	FINISH	DOOR THICKNESS	PK	CASE
CL205A0000	Chrome (C26)	1-3/8" (34 mm)	1	3
CL205A0001	Satin Chrome (26D)	1-3/8" (34 mm)	1	3
CL205A0002	Oil-Rubbed Bronze (10B)	1-3/8" (34 mm)	1	3
CL205A0003	Satin Nickel (15)	1-3/8" (34 mm)	1	3
CL205A0006	Flat Black	1-3/8" (34 mm)	1	3
CL205A0015	Chrome (C26)	1-3/4" (45 mm)	1	3
CL205A0016	Satin Chrome (26D)	1-3/4" (45 mm)	1	3
CL205A0017	Oil-Rubbed Bronze (10B)	1-3/4" (45 mm)	1	3
CL205A0018	Satin Nickel (15)	1-3/4" (45 mm)	1	3
CL205A0021	Flat Black	1-3/4" (45 mm)	1	3

Cavilock CL200 Privacy Pull



- Magnetic latching system
- Discreet latch button and emergency release
- No mortise cut-out required
- Opening: Reversible for left or right



NO.	FINISH	DOOR THICKNESS	PK	CASE
CL205D0000	Chrome (C26)	1-3/8" (34 mm)	1	3
CL205D0003	Satin Chrome (26D)	1-3/8" (34 mm)	1	3
CL205D0006	Oil-Rubbed Bronze (10B)	1-3/8" (34 mm)	1	3
CL205D0009	Satin Nickel (15)	1-3/8" (34 mm)	1	3
CL205D0018	Flat Black	1-3/8" (34 mm)	1	3
CL205D0030	Chrome (C26)	1-3/4" (45 mm)	1	3
CL205D0033	Satin Chrome (26D)	1-3/4" (45 mm)	1	3
CL205D0036	Oil-Rubbed Bronze (10B)	1-3/4" (45 mm)	1	3
CL205D0039	Satin Nickel (15)	1-3/4" (45 mm)	1	3
CL205D0048	Flat Black	1-3/4" (45 mm)	1	3

Cavilock CL200 Bi-Parting Pull



- Integrated striker to latch with corresponding privacy pull
- No mortise cut-out required
- Opening: Reversible for left or right



NO.	FINISH	DOOR THICKNESS	PK	CASE
CL205C0000	Chrome (C26)	1-3/8" (34 mm)	1	3
CL205C0001	Satin Chrome (26D)	1-3/8" (34 mm)	1	3
CL205C0002	Oil-Rubbed Bronze (10B)	1-3/8" (34 mm)	1	3
CL205C0003	Satin Nickel (15)	1-3/8" (34 mm)	1	3
CL205C0006	Flat Black	1-3/8" (34 mm)	1	3
CL205C0015	Chrome (C26)	1-3/4" (45 mm)	1	3
CL205C0016	Satin Chrome (26D)	1-3/4" (45 mm)	1	3
CL205C0017	Oil-Rubbed Bronze (10B)	1-3/4" (45 mm)	1	3
CL205C0018	Satin Nickel (15)	1-3/4" (45 mm)	1	3
CL205C0021	Flat Black	1-3/4" (45 mm)	1	3

INOX PD8000 Mortise Lockset for Sliding Doors



- For residential or commercial applications
- Heavy gauge steel lock case and solid brass cylinder
- Vertically adjustable strike



NO.	FINISH	FUNCTION	STYLE	DOOR THICKNESS	BACKSET	PK	CASE
17PD80SS17551	Satin Stainless Steel (US32D)	Entry	Linear	1-3/4" (45 mm)	2-3/4" (70 mm)	1	6
17PD80SS17542	Satin Stainless Steel (US32D)	Entry	Linear	1-3/4" (45 mm)	2-3/4" (70 mm)	1	6
17PD80SS37542	Satin Nickel (US15)	Privacy	Linear	1-3/8" (34 mm)	2-3/4" (70 mm)	1	6
17PD80ASS37542	Satin Nickel (US15)	Privacy	Arc	1-3/4" (45 mm)	2-3/4" (70 mm)	1	6
17PD82SS17510	Satin Nickel (US15)	Passage	Linear	1-3/4" (45 mm)	2-3/4" (70 mm)	1	6
17PD82SS37510	Satin Nickel (US15)	Passage	Linear	1-3/8" (34 mm)	2-3/4" (70 mm)	1	6

Pocket Door Hardware

INOX PD5000 Series Mortise Locks for Sliding Doors



- For residential or commercial applications
- Barrier free/ADA compliant
- Heavy gauge steel lock case and solid brass cylinder
- Vertically adjustable strike



NO.	FINISH	FUNCTION	DOOR THICKNESS	BACKSET	PK	CASE
17PD50SS25051	Satin Stainless Steel (US32D)	Entry / Entrée	1-3/4" (45 mm)	2-1/2" (64 mm)	1	6
17PD50SS27551	Satin Stainless Steel (US32D)	Entry / Entrée	1-3/4" (45 mm)	2-3/4" (70 mm)	1	6
17PD50SS25042	Satin Stainless Steel (US32D)	Privacy / Intimité	1-3/4" (45 mm)	2-1/2" (64 mm)	1	6
17PD50SS23442	Satin Stainless Steel (US32D)	Privacy / Intimité	1-3/4" (45 mm)	2-3/4" (70 mm)	1	6
17PD50SS25010	Satin Stainless Steel (US32D)	Passage / Passage	-	2-1/2" (64 mm)	1	6
17PD50SS23410	Satin Stainless Steel (US32D)	Passage / Passage	-	2-3/4" (70 mm)	1	6

INOX PD5000 Series Pulls



- Use with INOX PD5000 Series Mortise Locks
- Barrier free/ADA compliant



Ladder Pull

Square "C" Pull

Round "U" Pull

Square Split Pull

Tapered "D" Pull

NO.	FINISH	STYLE	PK	CASE
17PHIXSSLBT10	Satin Stainless Steel (US32D)	Ladder Pull / Poignée tubulaire	1	6
17PHIXSSLBB10	Satin Stainless Steel (US32D)	Ladder Pull / Poignée tubulaire	1	6
17PHIXSSCBT10	Satin Stainless Steel (US32D)	Square "C" Pull / Poignée carrée en « C »	1	6
17PHIXSSCBB10	Satin Stainless Steel (US32D)	Square "C" Pull / Poignée carrée en « C »	1	6
17PHIXSSUBT10	Satin Stainless Steel (US32D)	Round "U" Pull / Poignée ronde en « U »	1	6
17PHIXSSUBB10	Satin Stainless Steel (US32D)	Round "U" Pull / Poignée ronde en « U »	1	6
17PHIXSSURT10	Satin Stainless Steel (US32D)	Round "U" Pull / Poignée ronde en « U »	1	6
17PHIXSSDBT10	Satin Stainless Steel (US32D)	Square Split Pull / Poignée carrée divisée	1	6
17PHIXSSDBB10	Satin Stainless Steel (US32D)	Square Split Pull / Poignée carrée divisée	1	6
17PHIXSSTDBT10	Satin Stainless Steel (US32D)	Tapered "D" Pull / Poignée fuselée en « D »	1	6
17PHIXSSTDBB10	Satin Stainless Steel (US32D)	Tapered "D" Pull / Poignée fuselée en « D »	1	6

Bifold Track with Pivot Bracket

- Track for economical wood bifold door mechanism
- Rail Material: Steel
- Track Mounting: Top Jamb / Ceiling



NO.	FINISH	LENGTH	PK	BOX	CASE
14318WIP	White	17-3/4" (451 mm)	1	-	50
14324WIP	White	23-3/4" (603 mm)	1	-	50
14328WIP	White	27-3/4" (705 mm)	1	-	50
14330WIP	White	29-3/4" (756 mm)	1	-	50
14332WIP	White	31-3/4" (806 mm)	1	-	50
14336WIP	White	35-3/4" (908 mm)	1	-	50
14348WIP	White	47-3/4" (1213 mm)	1	-	50
14360WIP	White	59-3/4" (1518 mm)	1	-	50
14372WIP	White	71-3/4" (1822 mm)	1	-	50
14396WIP	White	95-3/4" (2432 mm)	1	-	50

Bifold Door Hardware Kit with Track - 7/16" Pivots

- Hardware kit includes : Track, Slide guide, Door aligner, Knob, Jamb bracket, Bottom pivot, Top spring pivot
- Door Thickness: 1" - 1-3/8" (25 mm - 35 mm)
- Max. Load per Door: 30 lb (14 kg)
- Track Mounting: On Ceiling Surface
- Pre-Drilled Hole Diameter for Pivots: 7/16" (11 mm)



NO.	FINISH	NUMBER OF DOORS	LENGTH	PK	BOX	CASE
14012WBC	White	1	24" (610 mm)	1	5	20
14014WBC	White	1	36" (914 mm)	1	5	20
14015WBC	White	1	48" (1219 mm)	1	5	20
14025WBC	White	2	48" (1219 mm)	1	5	20
14027WBC	White	2	60" (1524 mm)	1	5	20
14028WBC	White	2	72" (1829 mm)	1	5	20

Bifold Door Hardware - 7/16" Pivots

- Plastic pivots, track joint included
- 1 set of hardware parts for the installation of a wood bi-fold door with 2 panels
- Track not included
- Max. Load per Door: 30 lb (14 kg)

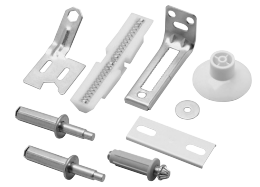


NO.	PK	CASE
14392IP	1	50

Bifold Door Hardware

Bifold Door Hardware - 7/16" Pivots

- Steel pivots, track joint included
- 1 set of hardware parts for the installation of a wood bi-fold door with 2 panels
- Track not included
- Max. Load per Door: 30 lb (14 kg)



NO.	PK	CASE
14393IP	1	50

Bifold Door Hardware - 7/16" Pivots

- Steel pivots, track joint included
- 1 set of hardware parts for the installation of a wood bi-fold door with 2 panels
- Track not included
- Max. Load per Door: 30 lb (14 kg)



NO.	PK	CASE
14394IP	1	50

Bifold Door Hardware - 7/16" Pivots

- 1 set of hardware parts for the installation of a wood bi-fold door with 2 panels
- Track not included
- Door Thickness: 1-3/8" (35 mm)
- Max. Load per Door: 30 lb (14 kg)



NO.	PK	CASE
14395IP	1	50

Bifold Door Hardware - 3/8" Pivots

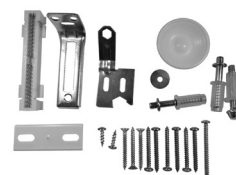
- Steel 3/8" pivot, wood pull
- 1 set of hardware parts for the installation of a wood bi-fold door with 2 panels
- Track not included
- Max. Load per Door: 30 lb (14 kg)



NO.	PK	CASE
14397IP	1	50

Bifold Door Hardware - 3/8" Pivots

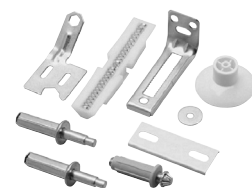
- Steel 3/8" pivot, track joint included
- 1 set of hardware parts for the installation of a wood bi-fold door with 2 panels
- Track not included
- Max. Load per Door: 30 lb (14 kg)



NO.	PK	CASE
1439238IP	1	50

Bifold Door Hardware - 3/8" Pivots

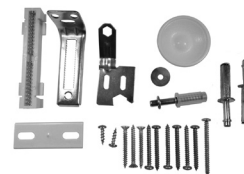
- Steel 3/8" pivot, track joint included
- 1 set of hardware parts for the installation of a wood bi-fold door with 2 panels
- Track not included
- Max. Load per Door: 30 lb (14 kg)



NO.	PK	CASE
1439338IP	1	50

Bifold Door Hardware - 3/8" Pivots

- Steel 3/8" pivot, track joint included
- 1 set of hardware parts for the installation of a wood bi-fold door with 2 panels
- Track not included
- Max. Load per Door: 30 lb (14 kg)



NO.	PK	CASE
1439438IP	1	50

Top/Bottom Bifold Hardware Set

- Max. Load per Door: 125 lb (57 kg)



NO.	FINISH	PK	CASE
246BF125N31	Varied	1	10

Bifold Door Hardware

Pivot Door Hardware

- Door Thickness: 1-3/8" - 1-3/4" (35 mm - 44 mm)
- Pre-Drilled Hole Diameter for Pivots: 7/16" (11 mm)
- Max. Load per Door: 30 lb (14 kg)



NO.	PK	CASE
14381V	1	50

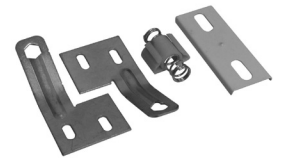
Pivot Door Hardware Kit

- Door Thickness: 1-3/8" - 1-3/4" (35 mm - 44 mm)
- Max. Load per Door: 30 lb (14 kg)



NO.	PK	CASE
143812IP	1	50

Track Connector Hardware Kit



NO.	PK	BOX	CASE
1430R	1	5	60

Aligner Bracket

- 4 panel (2 door) bifold application



NO.	FINISH	PK	BOX	CASE
1421WR	Zinc (C2G)	1	5	50

Bifold Door Top Pivot 7/16"

- Diameter: 7/16" (11 mm)



NO.	FINISH	PK	BOX	CASE
1424XIP	Zinc (C2G)	1	100	600

Bifold Door Top Roller 3/8"

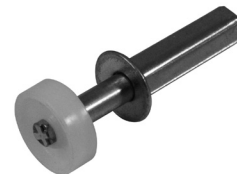
- Diameter: 3/8" (9.5 mm)



NO.	FINISH	PK	BOX	CASE
14275WIP	White	1	100	600

Bifold Door Top Roller 7/16"

- Diameter: 7/16" (11 mm)



NO.	FINISH	PK	BOX	CASE
14271XIP	Zinc (C2G)	1	100	600

Bifold Door Top Pivot 3/8"

- Diameter: 3/8" (9.5 mm)



NO.	FINISH	PK	BOX	CASE
14245WIP	White	1	100	600

Bifold Door Hardware

Bifold Door Bottom Pivot 3/8"



NO.	FINISH	PK	BOX	CASE
14235XIP	Zinc (C2G)	1	100	600

Bifold Door Lower Pivot 7/16"

- Pre-Drilled Hole Diameter for Pivots: 7/16" (11 mm)



NO.	FINISH	PK	BOX	CASE
1423XR	Zinc (C2G)	1	5	50

Track Pivot



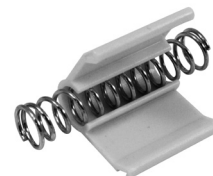
NO.	FINISH	PK	BOX	CASE
1426XIP	Zinc (C2G)	1	100	1000

Spring Snugger



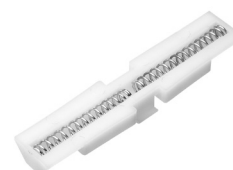
NO.	PK	BOX	CASE
1428R	1	5	100

Spring Snugger



NO.	FINISH	PK	BOX	CASE
246BF125N21	Varied	1	100	300

Slide Guide



NO.	FINISH	PK	CASE
14225WIP	White	1	500

Slide Guide



NO.	FINISH	PK	BOX	CASE
1422WR	White	1	5	50

Mortise Butt Hinge

- Pin: Non-Removable
- Screws included
- Type of Pin Head: Flat
- Height: 2-1/2" (64 mm)
- Width: 1-5/8" (41 mm)



NO.	FINISH	PK	CASE
830ACV	Zinc	1	250

Bifold Door Hardware

Contemporary Steel Bi-Fold Hinge

- Pin: Non-Removable
- Type of Pin Head: Steeple



NO.	FINISH	HEIGHT	WIDTH	SCREWS	PK	BOX	CASE
7830ACV	Antique Copper	2" (51 mm)	11/16" (17 mm)	Included	2	20	100
7830AEV	Antique English	2" (51 mm)	11/16" (17 mm)	Included	2	20	100
7830MATV	Matte Black	2" (51 mm)	11/16" (17 mm)	Included	2	20	100
7830PEWV	Pewter	2" (51 mm)	11/16" (17 mm)	Included	2	20	100
7831NBIP	Brushed Nickel (C15)	2-1/2" (64 mm)	7/8" (22 mm)	Not Included	1	20	500

Classic Steel Bi-Fold Hinge

- Pin: Non-Removable
- Screws included
- Type of Pin Head: Flat
- Height: 2" (51 mm)
- Width: 15/16" (23 mm)



NO.	FINISH	PK	BOX	CASE
830ACV	Antique Copper	2	20	100
830AEV	Antique English	2	20	100
830MATV	Matte Black	2	20	100

Classic Steel Bi-Fold Hinge

- Pin: Non-Removable
- Type of Pin Head: Flat
- Height: 3" (76.5 mm)
- Width: 1-3/16" (30 mm)



NO.	FINISH	SCREWS	PK	BOX	CASE
832AEV	Antique English	Included	3	20	100
832BB	Brass (C3-4)	Not Included	1	50	500
832BV	Brass (C3-4)	Included	3	10	100
832MATV	Matte Black	Included	3	20	100
832SNV	Satin Nickel (C15)	Included	3	20	100
832XIP	Zinc (C2G)	Not Included	1	-	500
832YZIP	Yellow Zinc (C2D)	Not Included	1	50	500
832WIP	White	Not Included	1	50	500
8325XIP	Zinc (C2G)	Not Included	1	-	500

Pull Handle

- Diameter: 1-13/16" (46 mm)
- Screws included



NO.	FINISH	PK	BOX	CASE
1425WR	White	1	5	50

Ball Knob

- Diameter: 1-1/4" (31 mm)



NO.	FINISH	PK	BOX	CASE
4605ABV	Antique Brass (C5)	1	20	200
4605ANV	Antique Nickel (C15A)	1	20	200
4605BBV	Bright Brass (C3)	1	20	200
4605BCV	Brushed Chrome (C26D)	1	20	200
4605BNV	Black Nickel	1	20	200
4605CV	Chrome (C26)	1	20	200
4605FBV	Flat Black	1	20	200
4605NBV	Brushed Nickel (C15)	1	20	200
4605ORB	Oil-Rubbed Bronze (C10B)	1	20	200

Ball Knob

- Diameter: 1-3/16" (30 mm)



NO.	FINISH	PK	BOX	CASE
460ANV	Antique Nickel (C15A)	1	20	400
460BBV	Bright Brass (C3)	1	20	400
460BCV	Brushed Chrome (C26D)	1	20	400
460BNV	Black Nickel	1	20	400
460CV	Chrome (C26)	1	20	400
460FBV	Flat Black	1	20	400
460NBV	Brushed Nickel (C15)	1	20	400
460ORB	Oil-Rubbed Bronze (C10B)	1	20	400

Bifold Door Hardware

Knob

- Diameter: 1-11/32" (34 mm)



NO.	FINISH	PK	BOX	CASE
851ABV	Antique Brass (C5)	1	20	200
851MATV	Matte Black	1	20	200
851NBP	Brushed Nickel (C15)	10	5	25
851NBV	Brushed Nickel (C15)	1	20	200
851ORBP	Oil-Rubbed Bronze (C10B)	10	5	25
851ORBV	Oil-Rubbed Bronze (C10B)	1	20	200
851PEWP	Pewter	10	5	25
851PEVV	Pewter	1	20	200

Knob

- Diameter: 1-3/4" (44 mm)



NO.	FINISH	PK	BOX	CASE
880MATV	Matte Black	1	10	100
880NBV	Brushed Nickel (C15)	1	10	100
880ORBV	Oil-Rubbed Bronze (C10B)	1	10	100
880PEVV	Pewter	1	10	100

Traditional Knob

- Diameter: 1-3/4" (44 mm)



NO.	FINISH	PK	BOX	CASE
881ANV	Antique Nickel (C15A)	1	10	100
881CV	Chrome (C26)	1	10	100
881FBV	Flat Black	1	10	100
881NBV	Brushed Nickel (C15)	1	10	100
881ORBV	Oil-Rubbed Bronze (C10B)	1	10	100
881WV	White	1	10	100

Pivot Hinge for Overlay Door

- Bushings at the pivot point provide smooth and silent operation
- Designed for mullion or face frame mounting



NO.	FINISH	MAX. LOAD PER DOOR	PK	CASE
242342BCPH	Brushed Chrome (C26D)	75 lb (34 kg)	1	20
242342PPH	Primed	75 lb (34 kg)	1	20

Heavy-Duty Pivot Hinge for Overlay Door

- Ideal for doors of wardrobes, cupboards and kitchen cabinets
- Ball bearings take vertical and lateral loads
- Designed for mullion or face frame mounting



NO.	FINISH	MAX. LOAD PER DOOR	PK	CASE
242327BCPH	Brushed Chrome (C26D)	150 lb (68 kg)	1	20
242327PPH	Primed	150 lb (68 kg)	1	20

Pivot Hinge for Flush, Recessed or Overlay Doors

- Leaves of top assembly separate for quick and easy installation
- Bushings at the pivot point provide smooth and silent operation



NO.	FINISH	POSITION	MAX. LOAD PER DOOR	PK	CASE
242340BCLPH	Brushed Chrome (C26D)	Left	75 lb (34 kg)	1	20
242340PLPH	Primed	Left	75 lb (34 kg)	1	20
242340BCRPH	Brushed Chrome (C26D)	Right	75 lb (34 kg)	1	20
242340PRPH	Primed	Right	75 lb (34 kg)	1	20

Wardrobe Pivots

Pivot Hinge for Flush/Recessed Door

- Leaves of bottom assembly separate for quick and easy installation
- Bushings at the pivot point provide smooth and silent operation



NO.	FINISH	POSITION	MAX. LOAD PER DOOR	PK	CASE
242341BCLPH	Brushed Chrome (C26D)	Left	75 lb (34 kg)	1	20
242341PLPH	Primed	Left	75 lb (34 kg)	1	20
242341BCRPB	Brushed Chrome (C26D)	Right	75 lb (34 kg)	1	20
242341PRPB	Primed	Right	75 lb (34 kg)	1	20

